

Mezzanine Inspection Report (Scoping)

Date: 12/01/2014	Station Name: F04 Waterfront	Mezzanine #: 083	Completed By: Chris Loose
Summary			
<p>All scoping was completed for the communications and power ducts in the faregate arrays. Pull string was successfully installed in the upper and lower communication ducts in the faregate arrays. Scoping and pull string was successfully installed in the power duct run from the kiosk to the AFC panel.</p> <p>No scanning is required at this mezzanine.</p>			
Scoping of Faregate Array(s)			
Task	Yes/No	Notes	
Communications Duct – Upper Faregate Array (4 Gates)			
Was video scoping completed for the entire duct run?	Yes	Refer to WMATA Waterfront 3inch Upper Comm Duct Video (1).avi and WMATA Waterfront 6inch Upper Comm Duct Video.avi files.	
Were pull strings installed at all faregates in the array?	Yes		
Were there any obstructions or blockages? Provide details of type and specific location.	No		
Is the duct at capacity? Provide additional details about the dimensions of ducts and number of wires.	No	4" duct, less than 15 wires	
Communications Duct - Lower Faregate Array (4 Gates)			
Was video scoping completed for the entire duct run?	Yes	Refer to WMATA Waterfront 3inch Lower Comm Duct Video (1).avi and WMATA Waterfront 6inch Lower Comm Duct Video.avi files.	
Were pull strings installed at all faregates in the array?	Yes		
Were there any obstructions or blockages? Provide details of type and specific location.	No	Minor rust in 3" duct	
Is the duct at capacity? Provide additional details about the dimensions of ducts and number of wires.	No	4" duct, less than 15 wires	
Power Duct - Upper Faregate Array (4 Gates)			
Was video scoping completed for the entire duct run?	Yes	Refer to WMATA Waterfront 6inch Upper Power Duct Video.avi file.	
Were there any obstructions or blockages? Provide details of type and specific location.	No		
Is the duct at capacity? Provide additional details about the dimensions of ducts and number of wires.	No	6" duct, less than 15 wires	
Power Duct - Lower Faregate Array (4 Gates)			
Was video scoping completed for the entire duct run?	Yes	Refer to WMATA Waterfront 6inch Lower Power Duct Video.avi file.	
Were there any obstructions or blockages? Provide details of type and specific location.	No		
Is the duct at capacity? Provide additional details about the dimensions of ducts and number of wires.	No	6" duct, less than 15 wires	

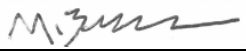
Scoping of Power Duct - Kiosk to AFC Panel		
Task	Yes/No	Notes
Kiosk to Handhole 1 (45' run)		
Was video scoping completed for the entire duct / conduit run?	Yes	Refer to WMATA Waterfront 6inch Power Kiosk to H.H.1 duct Video.avi file.
Was pull string installed?	Yes	
Were there any obstructions or blockages? Provide details of type and specific location.	No	
Is the duct / conduit at capacity? Provide additional details about the dimensions of duct / conduit and number of wires.	No	6" duct, less than 15 wires
Handhole 1 to Handhole 2 (70' run)		
Was video scoping completed for the entire duct / conduit run?	Yes	Refer to WMATA Waterfront 6inch Power H.H.1 to H.H.2 duct Video.avi file.
Was pull string installed?	Yes	
Were there any obstructions or blockages? Provide details of type and specific location.	No	
Is the duct / conduit at capacity? Provide additional details about the dimensions of duct / conduit and number of wires.	No	6" duct, less than 15 wires
Handhole 2 to AFC Panel (10' run)		
Was video scoping completed for the entire duct / conduit run?	Yes	Refer to WMATA Waterfront 6inch Power H.H.2 to AFC Duct Video.avi file.
Was pull string installed?	Yes	
Were there any obstructions or blockages? Provide details of type and specific location.	No	
Is the duct / conduit at capacity? Provide additional details about the dimensions of duct / conduit and number of wires.	No	6" duct, less than 15 wires
Observations / Issues / Next Steps		
Total duct run from kiosk to AFC panel is 125 feet.		
Sign Off		
	GFP Representative	WMATA PRGM
Name:	Mike Butler	
Signature:		
Date:	12/01/15	

Photo #1 – F04 Waterfront: Kiosk to handhole 1

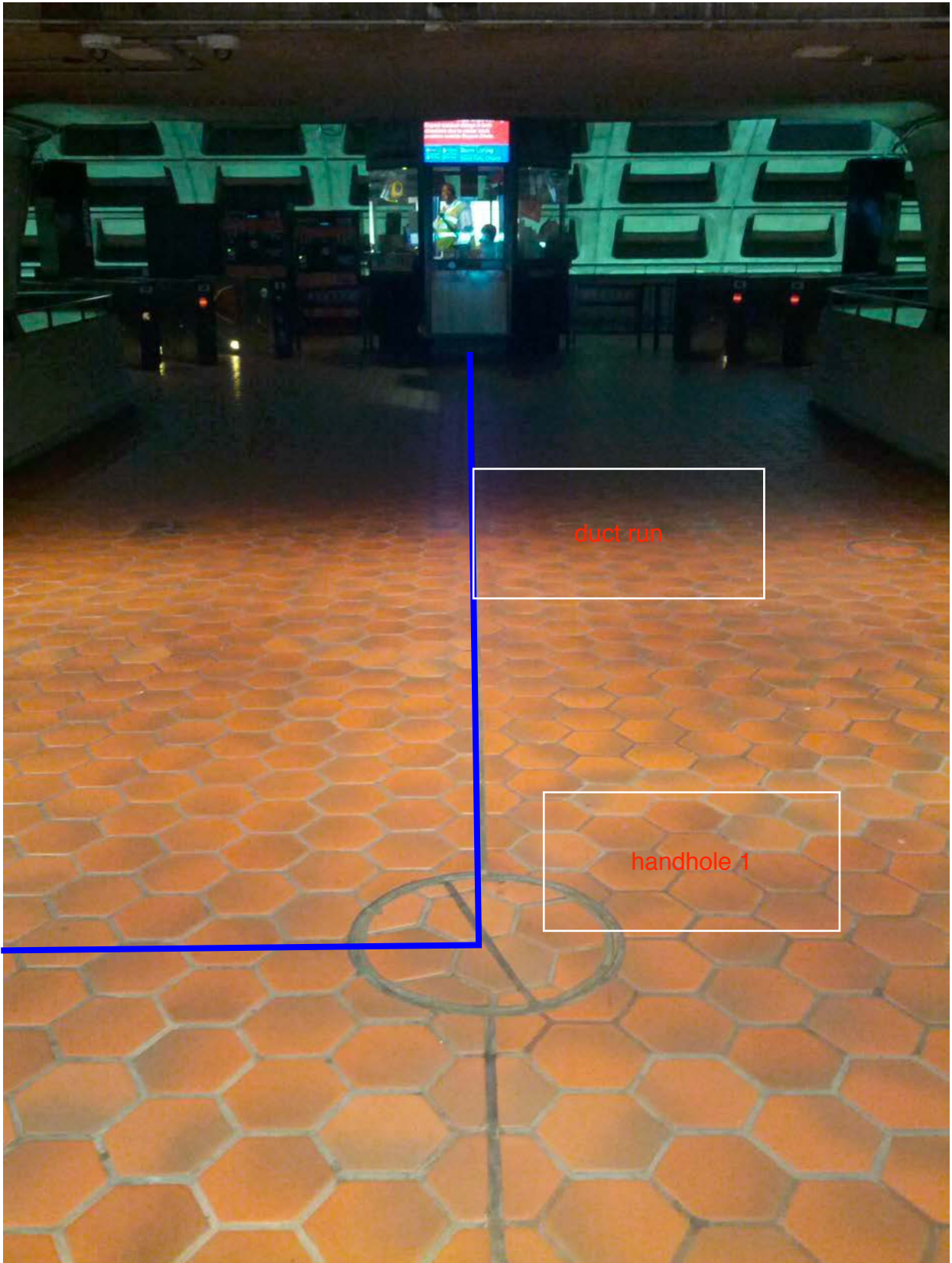


Photo #2 – F04 Waterfront: Handhole 1 to handhole 2

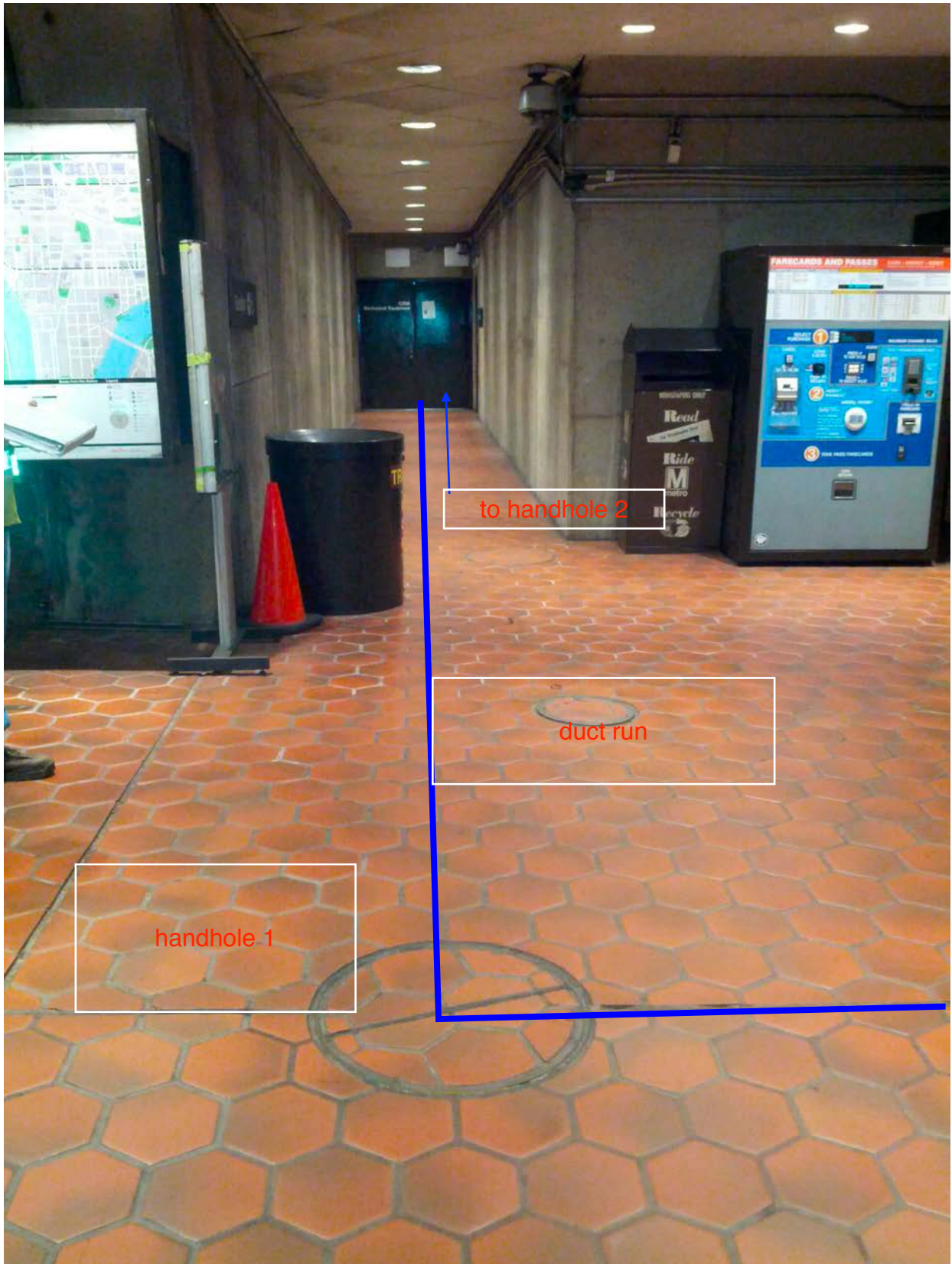


Photo #3 – F04 Waterfront: Handhole 2

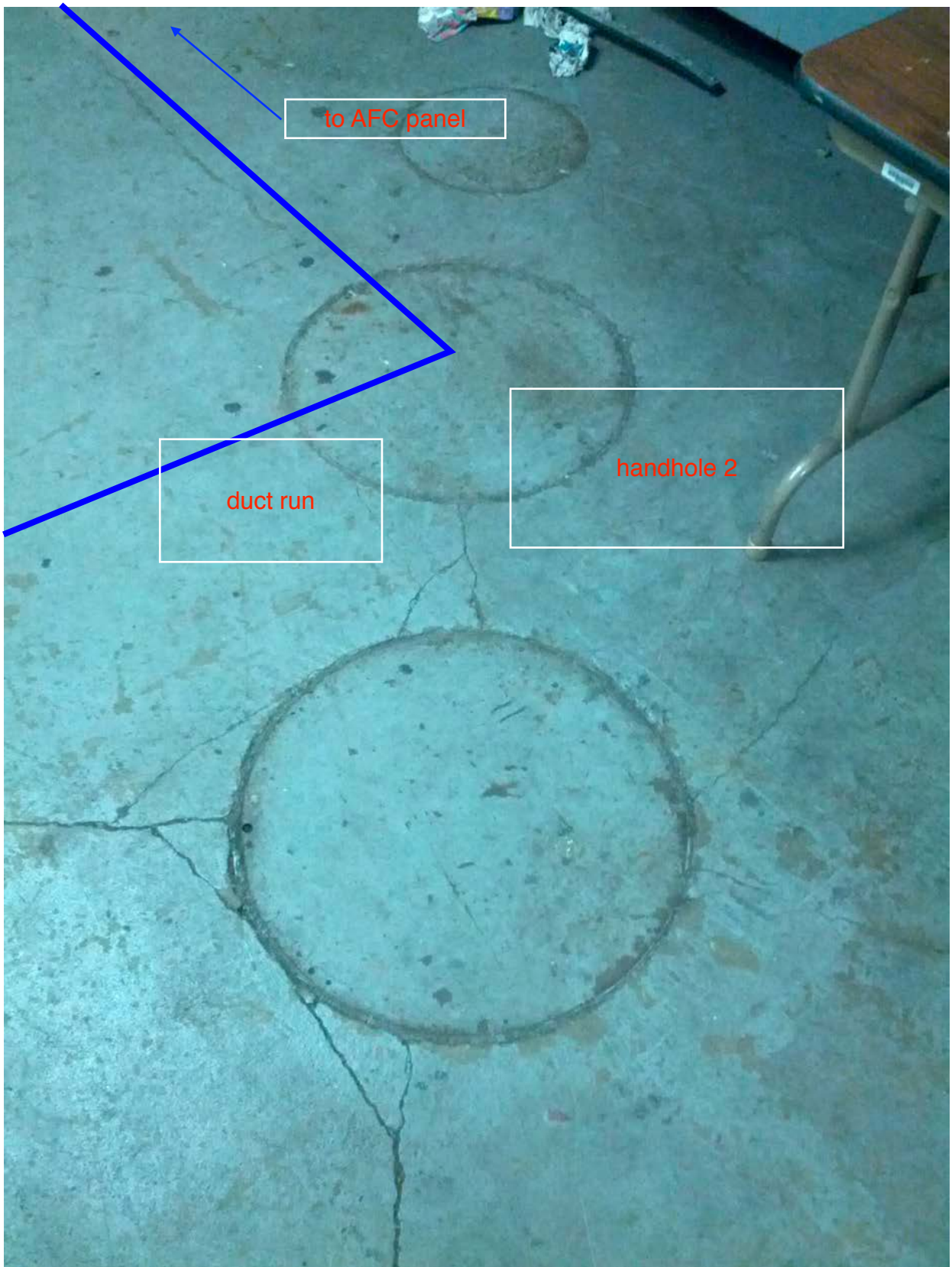


Photo #4 – F04 Waterfront: AFC Panel

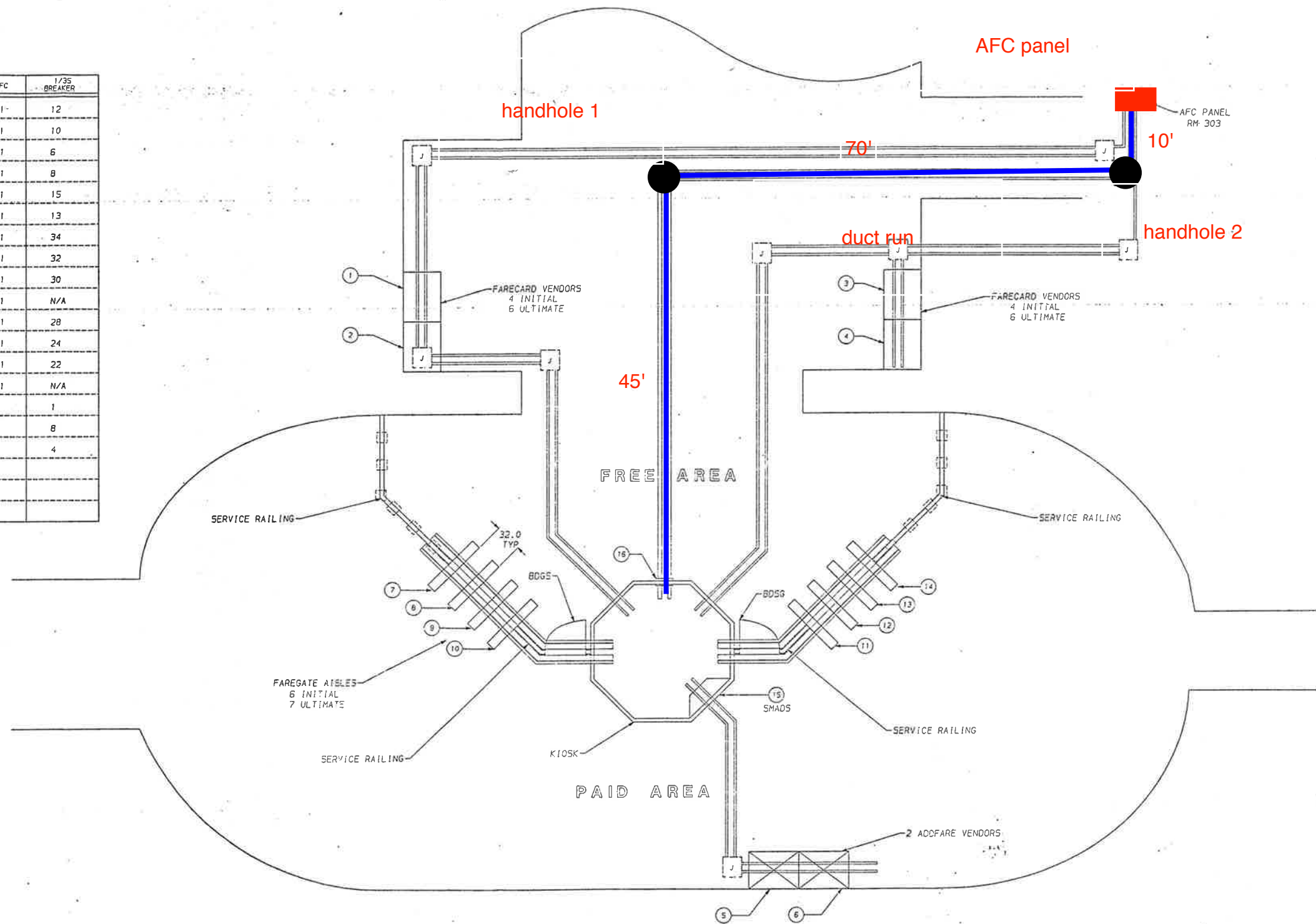


REVISIONS		
ZONE REV	DESCRIPTION	DATE APPROVED
A	INITIAL RELEASE	01/10/92 R. KUITE
B	DCN 028901 BJC 03/20/92	[Signature]

ITEM	NAME	S/N	PANEL AFC	1/3S BREAKER
1	VENDOR	1903	MESS-1	12
2	VENDOR	1904	MESS-1	10
3	VENDOR	1900	MESS-1	6
4	VENDOR	1890	MESS-1	8
5	ADDFARE	2818	MESS-1	15
6	ADDFARE	2836	MESS-1	13
7	ENTRY GATE	3827	MESS-1	34
8	REV. GATE	7901	MESS-1	32
9	REV. GATE	7900	MESS-1	30
10	EXIT GATE	4827	MESS-1	N/A
11	ENTRY GATE	3831	MESS-1	28
12	REV. GATE	7899	MESS-1	24
13	REV. GATE	7895	MESS-1	22
14	EXIT GATE	4828	MESS-1	N/A
15	SMADS	8817	KE	1
16	S. CLOCK	95721	KE	8
17	EMERGENCY LT		KE	4

NOTES:

- FOR VENDOR AND ADDFARE INSTALLATION SEE 931-4002.
- FOR SMADS INSTALLATION SEE 931-4001.
- FOR ENTRY, EXIT AND REVERSIBLE GATE INSTALLATION SEE 931-4003.
- FOR BI-DIRECTIONAL SERVICE GATE INSTALLATION SEE 931-4005.
- FOR A TYPICAL MEZZANINE INSTALLATION SEE 931-4000.
- CIRCUIT BREAKERS WITH COMMON NEUTRAL: 10 & 12, 6 & 8, 13 & 15, 30, 32 & 34, 22, 24 & 28.



MEZZANINE NO. 83

SEE SEPARATE PL WHEN ITEM NUMBERS ARE USED OR REF DESIGNATOR MAY BE USED IN LIEU OF ITEM NUMBERS	UNLESS OTHERWISE SPECIFIED HOLE TOLERANCES ARE: HOLE DIA TOLERANCES .015 THRU .125 +.004 - .001 .126 THRU .250 +.005 - .001 .251 THRU .500 +.006 - .001 .501 THRU .750 +.008 - .001	UNLESS OTHERWISE SPECIFIED DIMENSIONS ARE IN INCHES	UNLESS OTHERWISE SPECIFIED DIMENSIONS ARE IN INCHES	DATE: 03/20/92 DRAWN BY: R. KUITE CHECKED BY: [Signature]	 CUBIC AUTOMATIC NAVIGATION COLLECTION SYSTEMS GROUP WATERFRONT STATION MEZZANINE LAYOUT SHEET NO. 931-4019
--------------------------------------------------------------------------------------------------	-------------------------------------------------------------------------------------------------------------------------------------------------------------------------------------------------------	--------------------------------------------------------	--------------------------------------------------------	-----------------------------------------------------------------	-------------------------------------------------------------------------------------------------------------------------------

Mezzanine Inspection Report (Scoping)

Date: 01/26/2015	Station Name: F05 Navy Yard West	Mezzanine #: 105	Completed By: Chris Loose
------------------	----------------------------------	------------------	---------------------------

Summary

Video scoping completed in communication and power ducts for upper and lower faregate arrays. Pull strings were successfully installed in communication ducts in upper and lower faregate arrays. Pull string was installed in the 2" power conduit from the kiosk to the AFC panel.

No scanning required at this mezzanine.

Scoping of Faregate Array(s)

Task	Yes/No	Notes
Communications Duct – Upper Faregate Array (3 Gates)		
Was video scoping completed for the entire duct run?	Yes	Refer to WMATA Navy Yard West Upper Comm 6inch Duct Video.avi file.
Were pull strings installed at all faregates in the array?	Yes	
Were there any obstructions or blockages? Provide details of type and specific location.	No	
Is the duct at capacity? Provide additional details about the dimensions of ducts and number of wires.	No	3" duct less than 15 wires
Communications Duct - Lower Faregate Array (11 Gates)		
Was video scoping completed for the entire duct run?	Yes	Refer to WMATA Navy Yard West Lower Comm 3inch Duct Video.avi and WMATA Navy Yard West Lower Comm 6inch Duct Video.avi files.
Were pull strings installed at all faregates in the array?	Yes	
Were there any obstructions or blockages? Provide details of type and specific location.	No	
Is the duct at capacity? Provide additional details about the dimensions of ducts and number of wires.	No	3" duct less than 15 wires
Power Duct - Upper Faregate Array (3 Gates)		
Was video scoping completed for the entire duct run?	Yes	Refer to WMATA Navy Yard West Upper Power 6inch Duct Video.avi file.
Were there any obstructions or blockages? Provide details of type and specific location.	No	
Is the duct at capacity? Provide additional details about the dimensions of ducts and number of wires.	No	6" duct less than 15 wires
Power Duct - Lower Faregate Array (11 Gates)		
Was video scoping completed for the entire duct run?	Yes	Refer to WMATA Navy Yard West Lower Power 6inch Duct Video.avi file.
Were there any obstructions or blockages? Provide details of type and specific location.	No	
Is the duct at capacity? Provide additional details about the dimensions of ducts and number of wires.	No	6" duct less than 15 wires


Scoping of Power Duct - Kiosk to AFC Panel		
Task	Yes/No	Notes
Kiosk to AFC panel (45' run)		
Was video scoping completed for the entire duct / conduit run?	No	2" conduit – no scoping required
Was pull string installed?	Yes	
Were there any obstructions or blockages? Provide details of type and specific location.	No	
Is the duct / conduit at capacity? Provide additional details about the dimensions of duct / conduit and number of wires.	No	Conduit was empty
Observations / Issues / Next Steps		
<p>Conduit for power run from kiosk to AFC panel drops directly below the kiosk to lower level. The conduit then continues down the hallway of the lower level to the AFC panel room where it enters a shared trough along the ceiling and enters 2" conduit above the AFC panel. Total conduit run from kiosk to AFC panel is approximately 45'.</p> <p>Existing AFC Installation Plan does not accurately depict the faregates for this mezzanine. A sketch was included on the Electrical Drawing instead.</p>		
Sign Off		
	GFP Representative	WMATA PRGM
Name:	Zach Fitzwater	
Signature:		
Date:	01/26/2015	

Photo #1 – F05 Navy Yard West: Shared overhead trough in AFC panel room

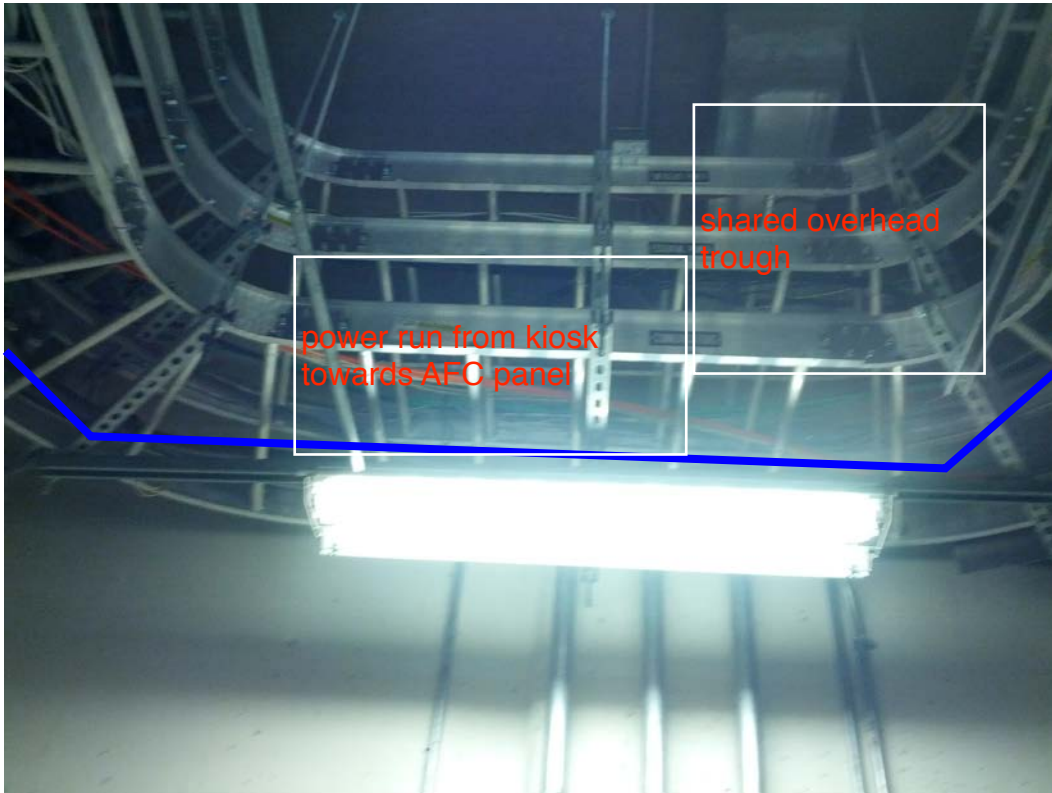


Photo #2 – Navy Yard West: Wire transition from shared overhead trough to 2" conduit to AFC panel

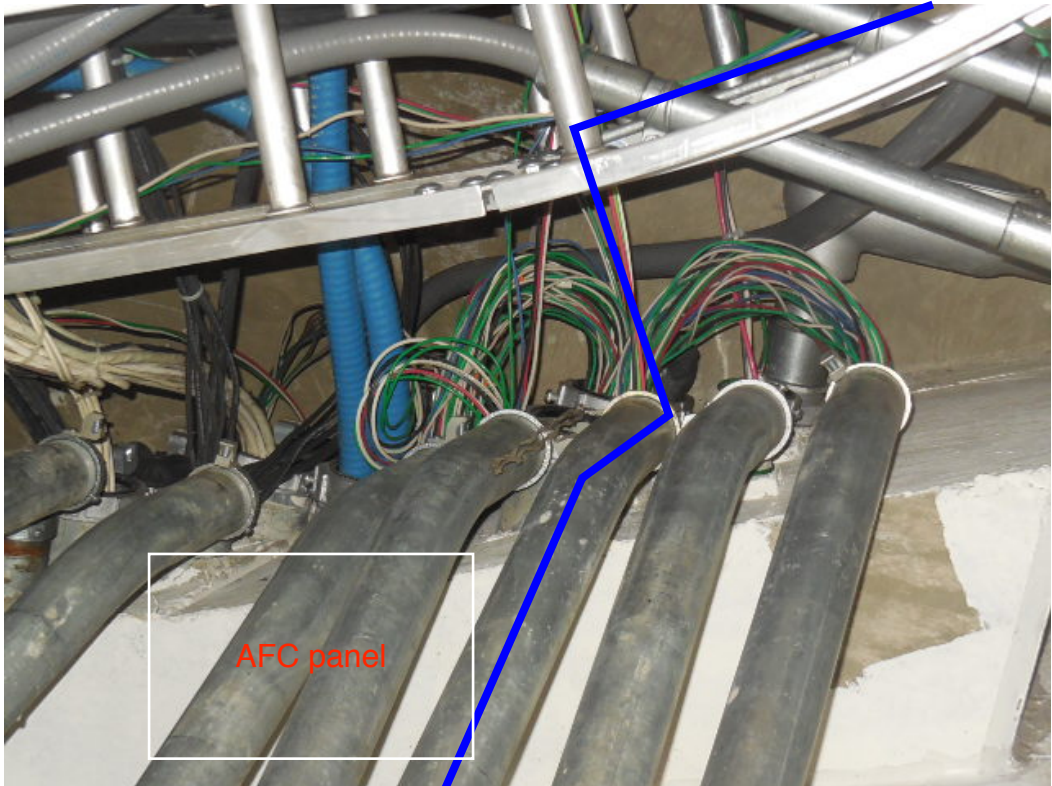
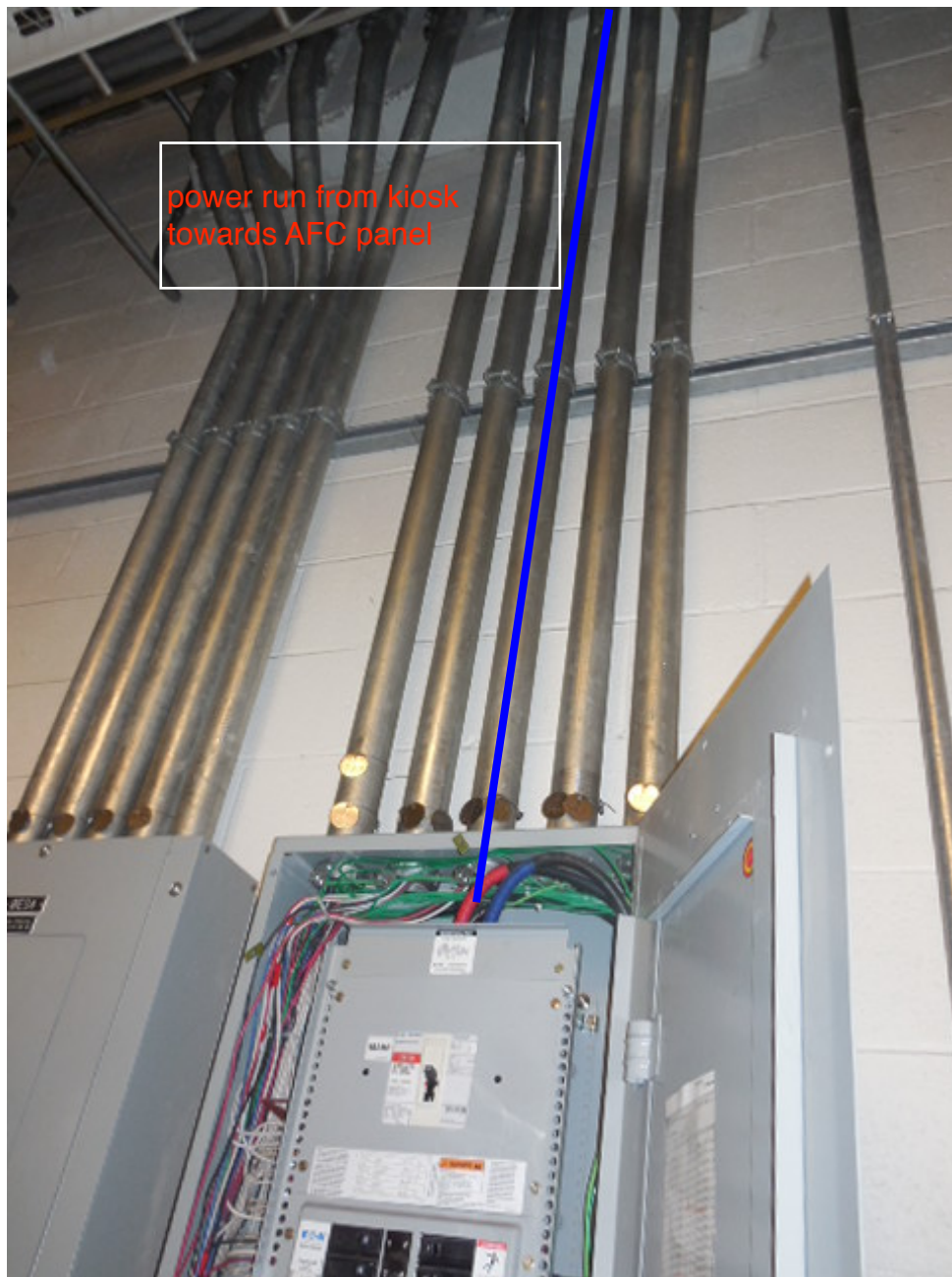
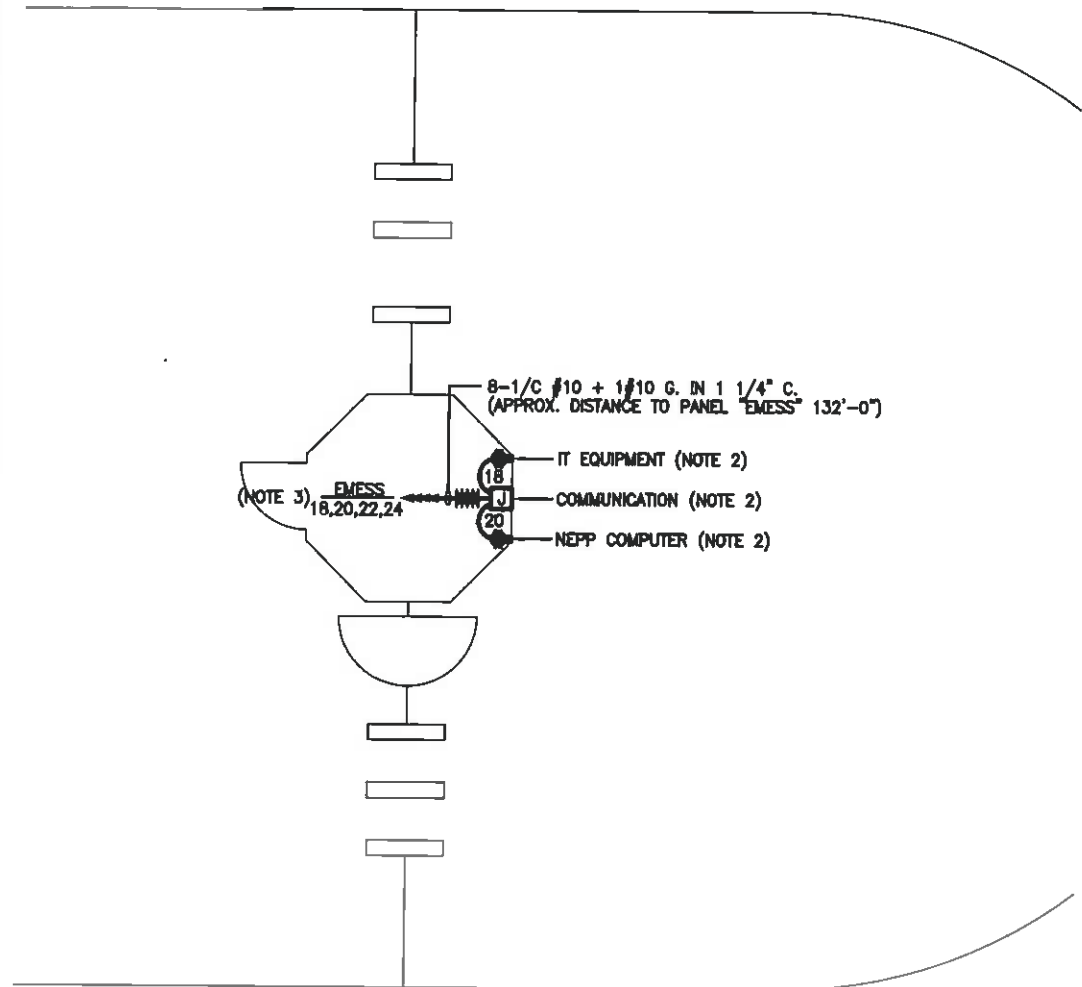
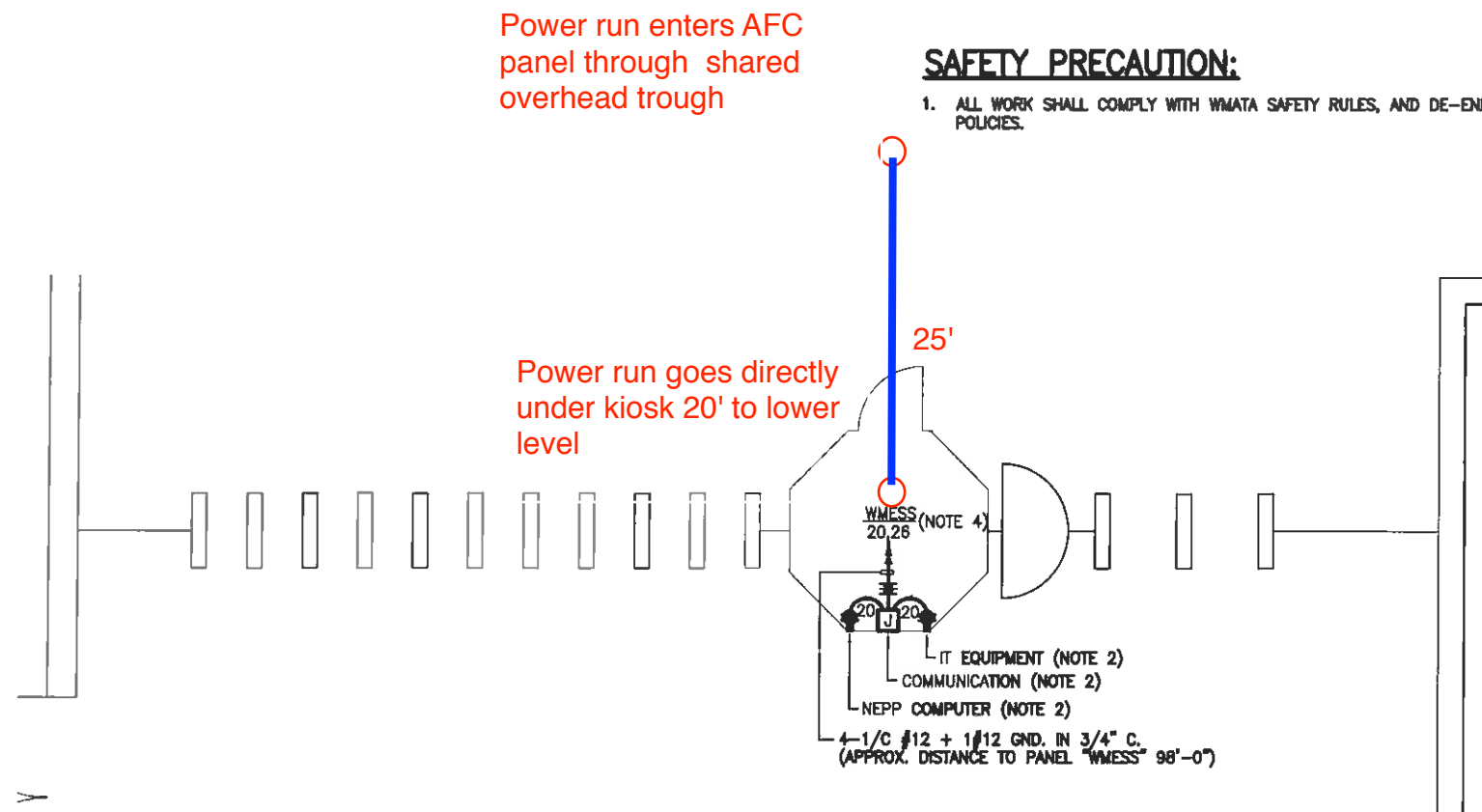


Photo #3 – F05 Navy Yard West: 2" conduit into AFC panel





MEZZANINE KIOSK (EAST) - POWER
SCALE: 1/4" = 1'- 0"



KIOSK (WEST) - POWER
SCALE: 1/4" = 1'- 0"

DRAWING NOTES:

1. USE EXISTING UNDER FLOOR DUCT FOR POWER WIRING. ALL OUTSIDE FLOOR DUCT WIRING SHALL BE IN CONDUIT.
2. VERIFY WITH WMATA PERSONNEL FOR LOCATION OF RECEPTACLES & JUNCTION BOXES.
3. CONNECT CIRCUIT #18, #20, #22 & #24 TO FOUR (4) EXISTING 20A, 1P SPARE CIRCUIT BREAKERS IN THE EXISTING PANEL "EMESS", SEE PANEL SCHEDULE ON DWG. F05-E-102.
4. CONNECT CIRCUIT #20 & #26 TO TWO (2) EXISTING 20A, 1P SPARE CIRCUIT BREAKERS IN THE EXISTING PANEL "WMESS", SEE PANEL SCHEDULE ON DWG. F05-E-102.

SAFETY PRECAUTION:

1. ALL WORK SHALL COMPLY WITH WMATA SAFETY RULES, AND DE-ENERGIZATION POLICIES.

Power run enters AFC panel through shared overhead trough

Power run goes directly under kiosk 20' to lower level

25'

CONTRACT NO.
14-FQ10060-CENI-24

DESIGNED	C. MED	08-14
		DATE
DRAWN	C. MED	08-14
		DATE
CHECKED	B. EDL	08-14
		DATE
APPROVED	N/A	
		DATE

REFERENCE DRAWINGS		REVISIONS		
NUMBER	DESCRIPTION	DATE	BY	DESCRIPTION

WASHINGTON METROPOLITAN AREA TRANSIT AUTHORITY
DEPARTMENT OF TRANSIT INFRASTRUCTURE AND ENGINEERING SERVICES
OFFICE OF INFRASTRUCTURE RENEWAL PROGRAM

GFP A Gannett Fleming/Parsons JOINT VENTURE

APPROVED _____ SUBMITTED _____
PROJECT MANAGER

NEW ELECTRONIC PAY PROGRAM (NEPP)
IN METRORAIL STATIONS
NAVY YARD EAST & WEST
MEZZANINE KIOSK - POWER

SCALE: AS SHOWN DRAWING NO. F05-E-101

Mezzanine Inspection Report (Scoping)

Date: 12/11/2014	Station Name: F06 Anacostia North	Mezzanine #: 085	Completed By: Byron Williams
------------------	-----------------------------------	------------------	------------------------------

Summary

Video scoping and pull string installation was completed for the faregate array communications duct and the power duct between Kiosk and AFC Panel. Video scoping was also completed for the faregate array power duct.

Scanning is not required for this mezzanine.

Scoping of Faregate Array(s)

Task	Yes/No	Notes
Communications Duct – Faregate Array (7 Faregates)		
Was video scoping completed for the entire duct run?	Yes	Refer to WMATA Anacostia North 3inch Comm Faregates Video.avi and WMATA Anacostia North 6inch Comm Faregates Video.avi files
Were pull strings installed at all faregates in the array?	Yes	
Were there any obstructions or blockages? Provide details of type and specific location.	No	Dust and debris
Is the duct at capacity? Provide additional details about the dimensions of ducts and number of wires.	No	6" duct less than 10 wires, and 3" duct
Power Duct - Faregate Array (7 Faregates)		
Was video scoping completed for the entire duct run?	Yes	Refer to WMATA Anacostia North 6inch Power Faregates Video.avi file
Were there any obstructions or blockages? Provide details of type and specific location.	No	
Is the duct at capacity? Provide additional details about the dimensions of ducts and number of wires.	No	6" duct less than 10 wires

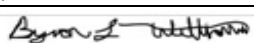
Scoping of Power Duct - Kiosk to AFC Panel		
Task	Yes/No	Notes
Kiosk to AFC Panel (58')		
Was video scoping completed for the entire duct / conduit run?	Yes	Refer to WMATA Anacostia North 6inch Power Kiosk to AFC Panel Video.avi file
Was pull string installed?	Yes	
Were there any obstructions or blockages? Provide details of type and specific location.	No	Dust and debris
Is the duct / conduit at capacity? Provide additional details about the dimensions of duct / conduit and number of wires.	No	6" duct less than 10 wires
Observations / Issues / Next Steps		
AFC Panel box NSF was used as raceway for wires not pertaining to NSF breakers. Inspection team avoided tehse wires and associated path it took entering an existing box.		
Sign Off		
	GFP Representative	WMATA PRGM
Name:	Byron Williams	
Signature:		
Date:	12/11/2014	

Photo #1 – F06 Anacostia North: Run from Kiosk to Room #301 AFC Panel NSF

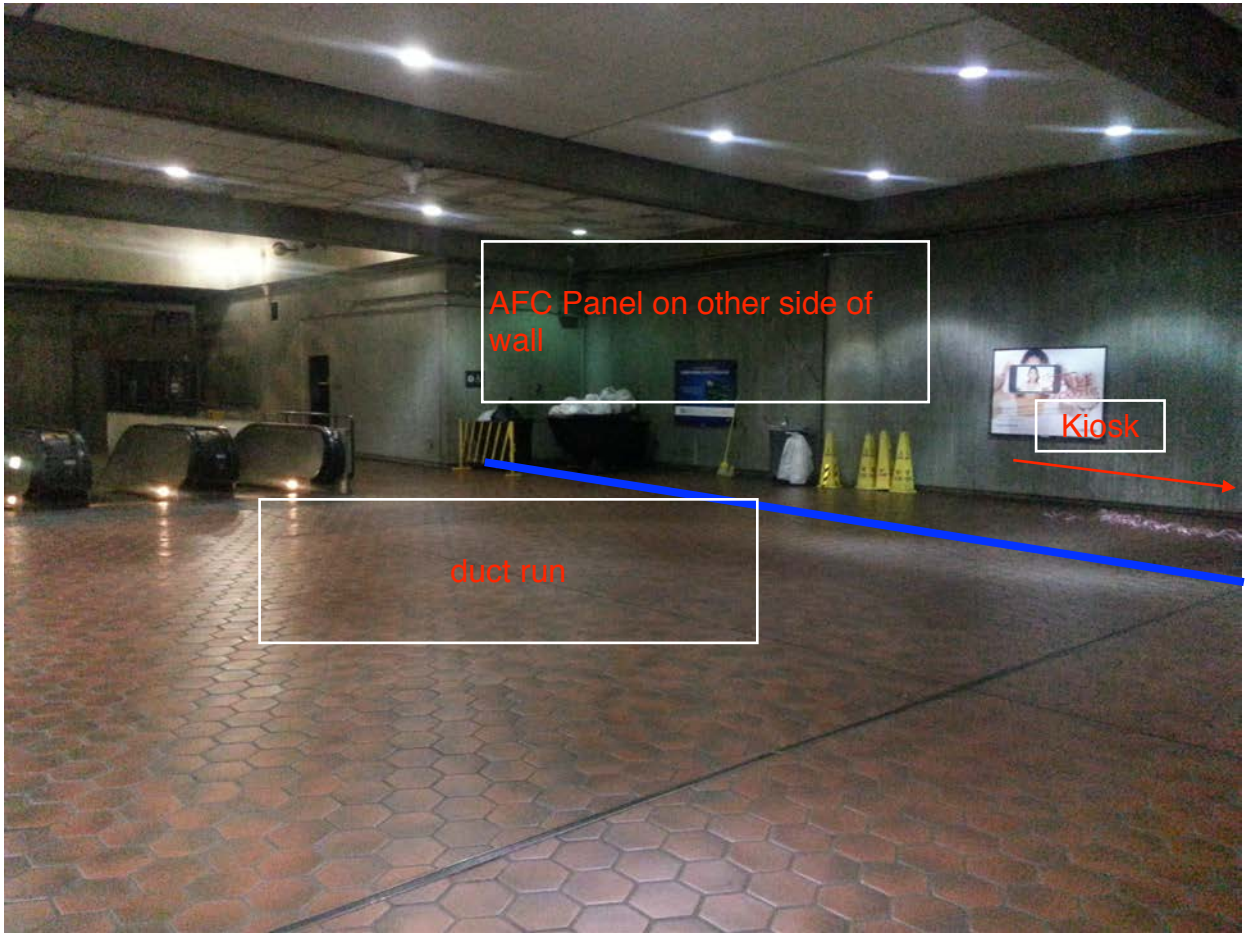
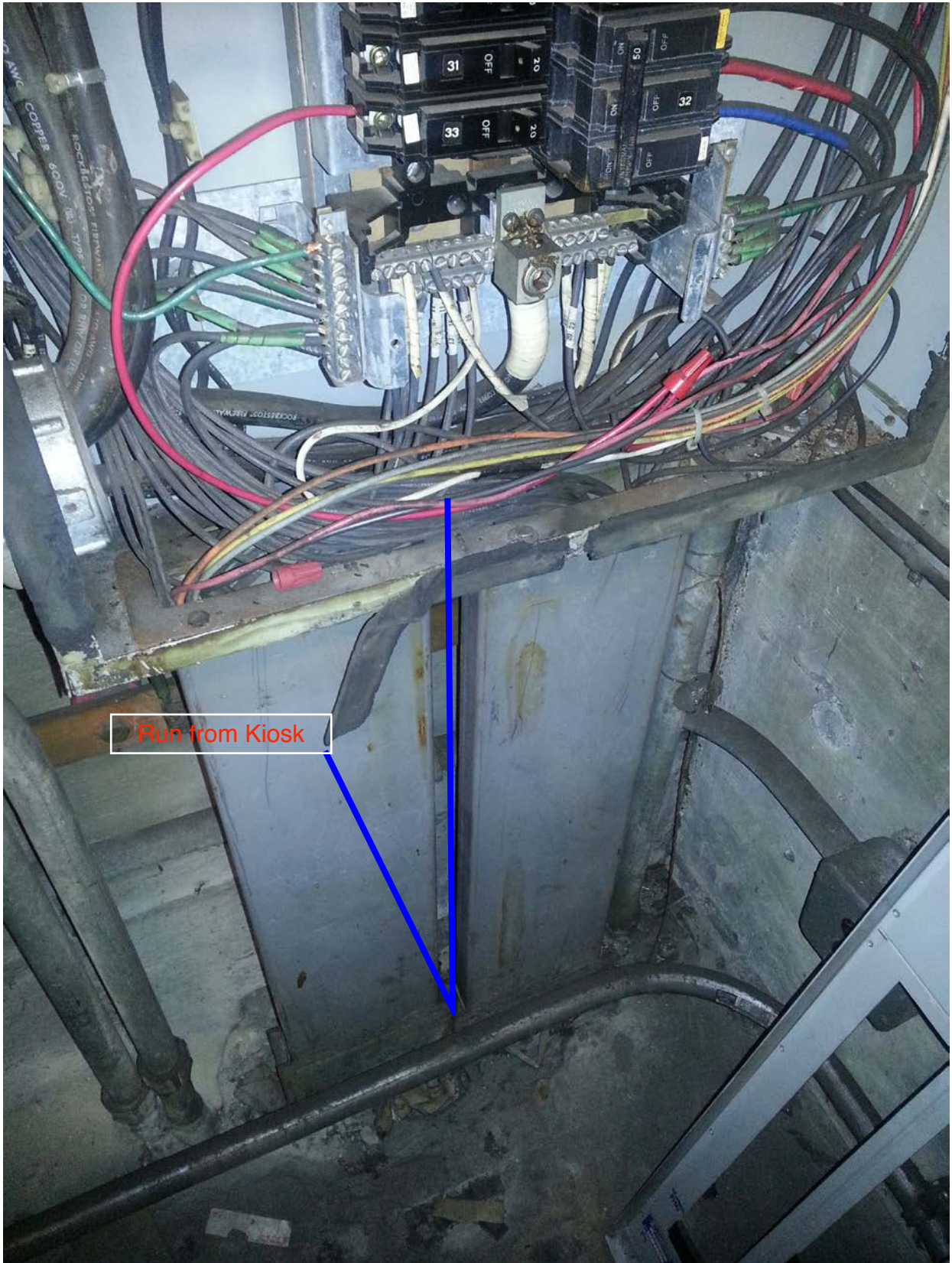


Photo #2 – F06 Anacostia North: Room 301 with AFC Panel NSF

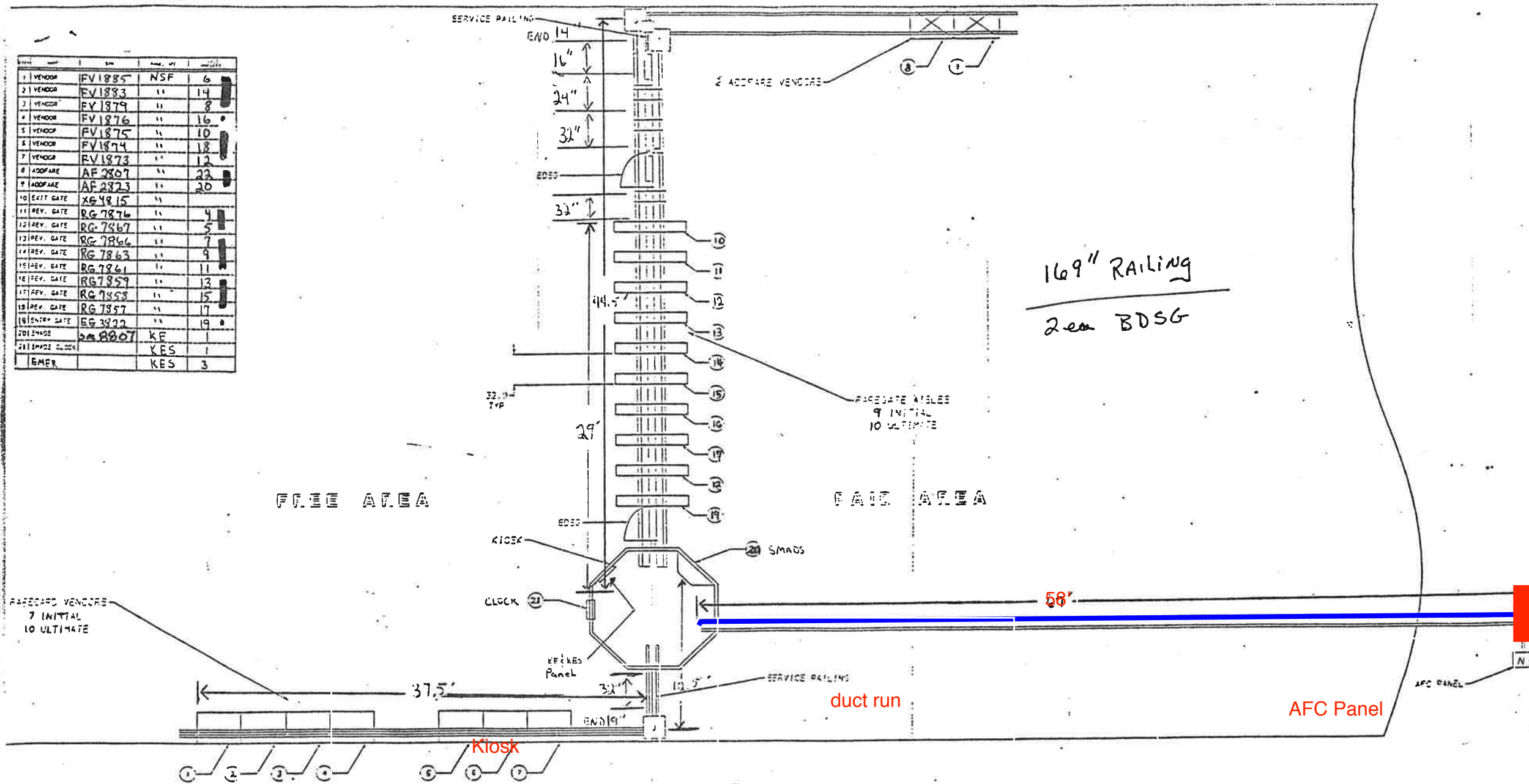


Photo #3 – F06 Anacostia North: AFC Panel NSF



Run from Kiosk

ITEM	DESCRIPTION	QTY	UNIT	REMARKS
1	VENDOR	FV1885	NSF	6
2	VENDOR	FV1883	"	14
3	VENDOR	FV1879	"	8
4	VENDOR	FV1876	"	16
5	VENDOR	FV1875	"	10
6	VENDOR	FV1874	"	18
7	VENDOR	FV1873	"	12
8	ADDFARE	AF2807	"	23
9	ADDFARE	AF2823	"	20
10	EXIT GATE	XG4815	"	
11	REV. GATE	RG7876	"	4
12	REV. GATE	RG7867	"	5
13	REV. GATE	RG7866	"	7
14	REV. GATE	RG7863	"	9
15	REV. GATE	RG7861	"	11
16	REV. GATE	RG7857	"	13
17	REV. GATE	RG7858	"	15
18	REV. GATE	RG7857	"	17
19	ENTRY GATE	EG3822	"	19
20	EMER	KA8807	KE	1
21	EMER		KES	1
22	EMER		KES	3



Ref. 931-4003
 FOR WACKER Ducting
 & WIRE SIZES & HARDWARE CALLOUT

NO.	DESCRIPTION	QTY	UNIT	REMARKS
1	WACKER DUCTING			
2	WIRE			
3	HARDWARE			

85

Mezzanine Inspection Report (Scoping)

Date: 12/10/2014	Station Name: F06 Anacostia South	Mezzanine #: 106	Completed By: Byron Williams
-------------------------	------------------------------------------	-------------------------	-------------------------------------

Summary

Video scoping and pull string installation was completed for the faregate array communications duct and the power duct between Kiosk and AFC Panel. Video scoping was also completed for the faregate array power duct.

Scanning is not required for this mezzanine.

Scoping of Faregate Array(s)

Task	Yes/No	Notes
Communications Duct – Faregate Array (8 Gates)		
Was video scoping completed for the entire duct run?	Yes	Refer to WMATA Anacostia South 3inch Comm Faregates Video.avi and WMATA Anacostia South 6inch Comm Faregates Video.avi files
Were pull strings installed at all faregates in the array?	Yes	
Were there any obstructions or blockages? Provide details of type and specific location.	No	Dust and debris
Is the duct at capacity? Provide additional details about the dimensions of ducts and number of wires.	No	6" duct less than 10 wires, and 3" duct
Power Duct - Faregate Array (8 Gates)		
Was video scoping completed for the entire duct run?	Yes	Refer to WMATA Anacostia South 6inch Power Faregates Video.avi file
Were there any obstructions or blockages? Provide details of type and specific location.	No	Dust and debris
Is the duct at capacity? Provide additional details about the dimensions of ducts and number of wires.	No	6" duct less than 10 wires

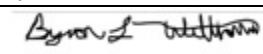
Scoping of Power Duct - Kiosk to AFC Panel		
Task	Yes/No	Notes
Kiosk to Manhole 1 (15')		
Was video scoping completed for the entire duct / conduit run?	Yes	Refer to WMATA Anacostia South 6inch Power Kiosk to HH1 Video.avi file
Was pull string installed?	Yes	
Were there any obstructions or blockages? Provide details of type and specific location.	No	Dust and debris
Is the duct / conduit at capacity? Provide additional details about the dimensions of duct / conduit and number of wires.	No	6" duct less than 10 wires
Handhole 1 to AFC Panel (8')		
Was video scoping completed for the entire duct / conduit run?	Yes	Refer to WMATA Anacostia South 6inch Power HH1 to AFC Panel Video.avi file
Was pull string installed?	Yes	
Were there any obstructions or blockages? Provide details of type and specific location.	Yes	Heavy dust and rust in duct. Recommended to vacuum duct before installing wire.
Is the duct / conduit at capacity? Provide additional details about the dimensions of duct / conduit and number of wires.	No	6" duct less than 10 wires
Observations / Issues / Next Steps		
Sign Off		
	GFP Representative	WMATA PRGM
Name:	Byron Williams	
Signature:		
Date:	12/10/2014	

Photo #1 – F06 Anacostia South: Mezzanine Kiosk

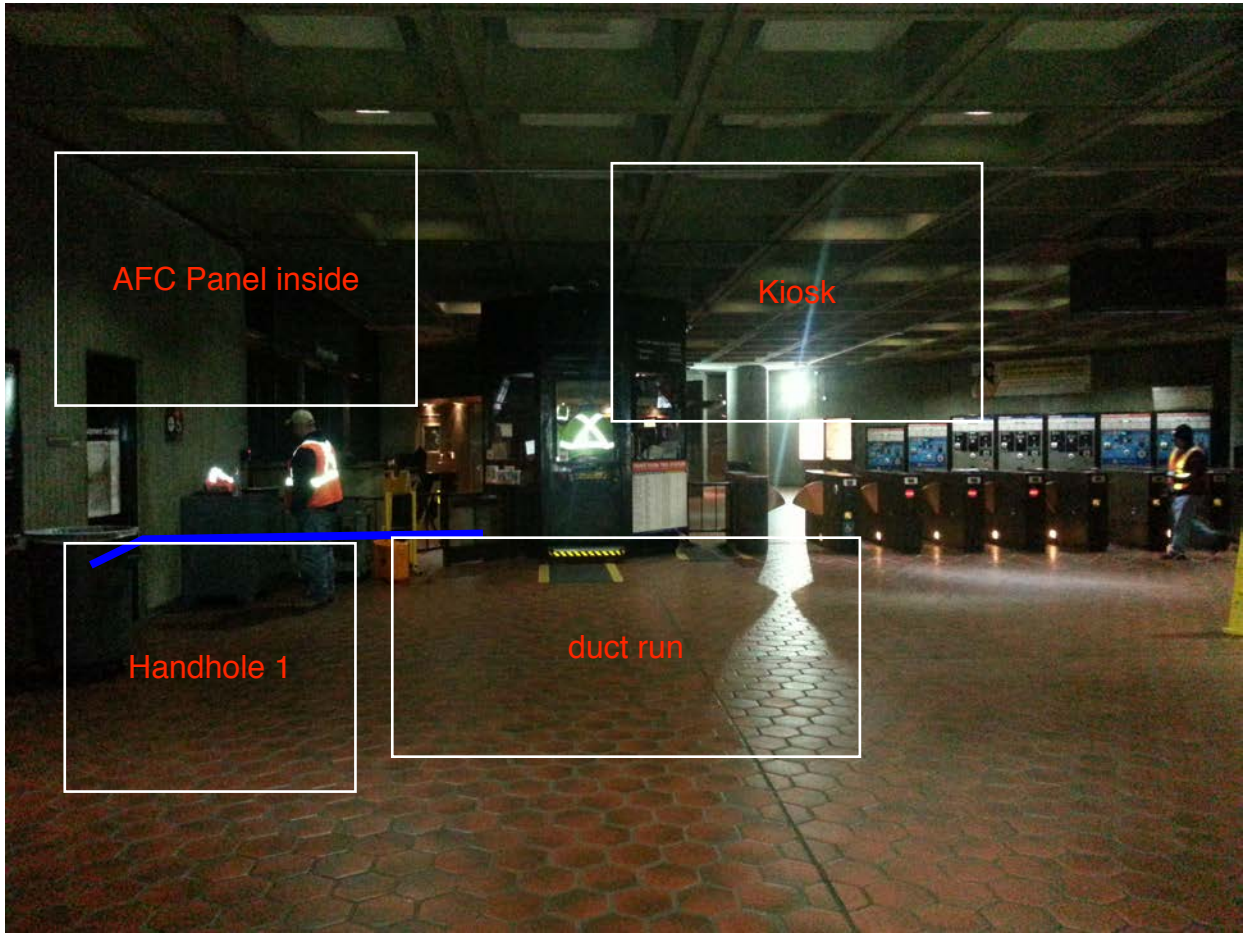


Photo #2 – F06 Anacostia South: Handhole 1

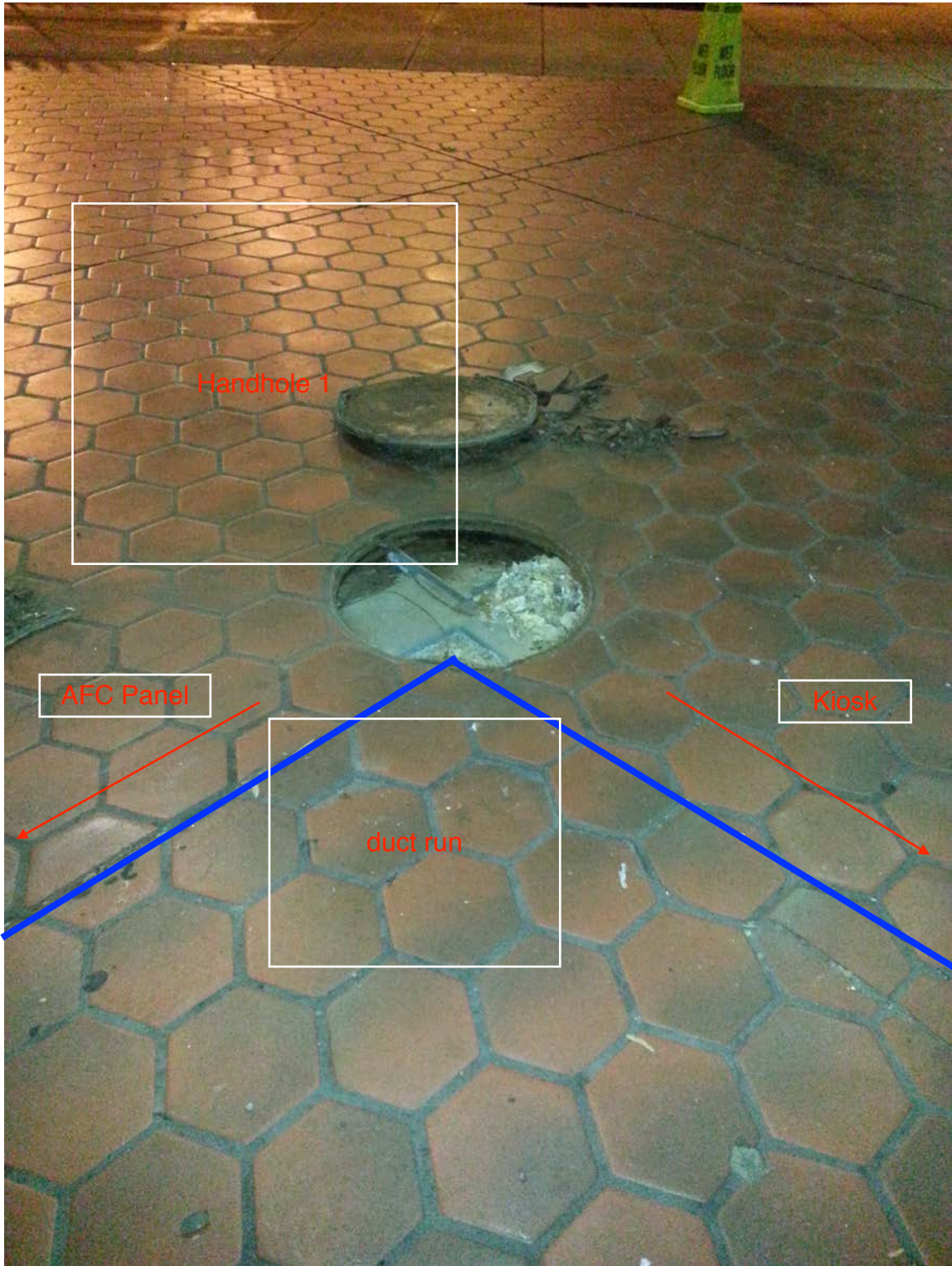


Photo #3 – F06 Anacostia South: AFC Panel room

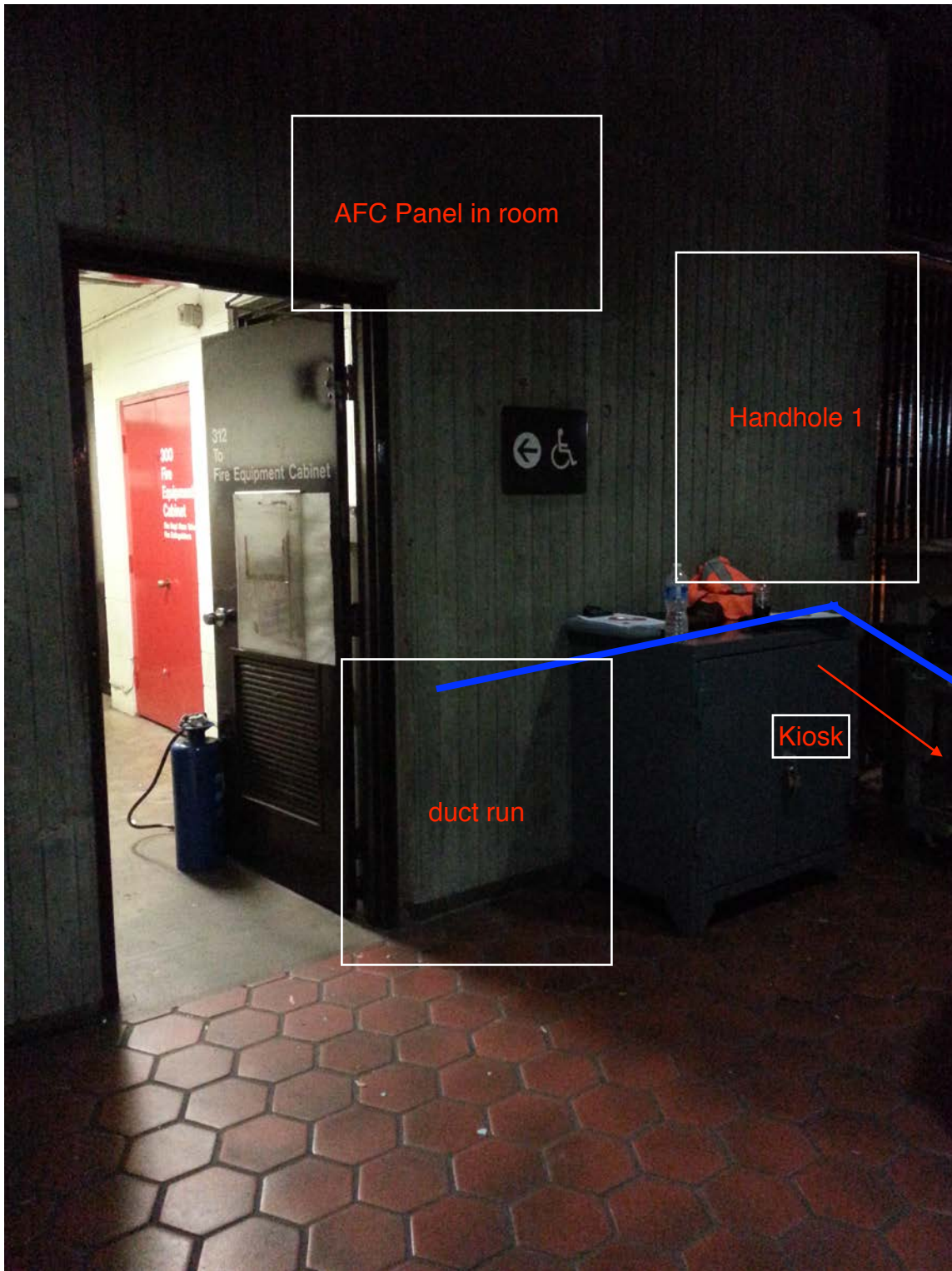
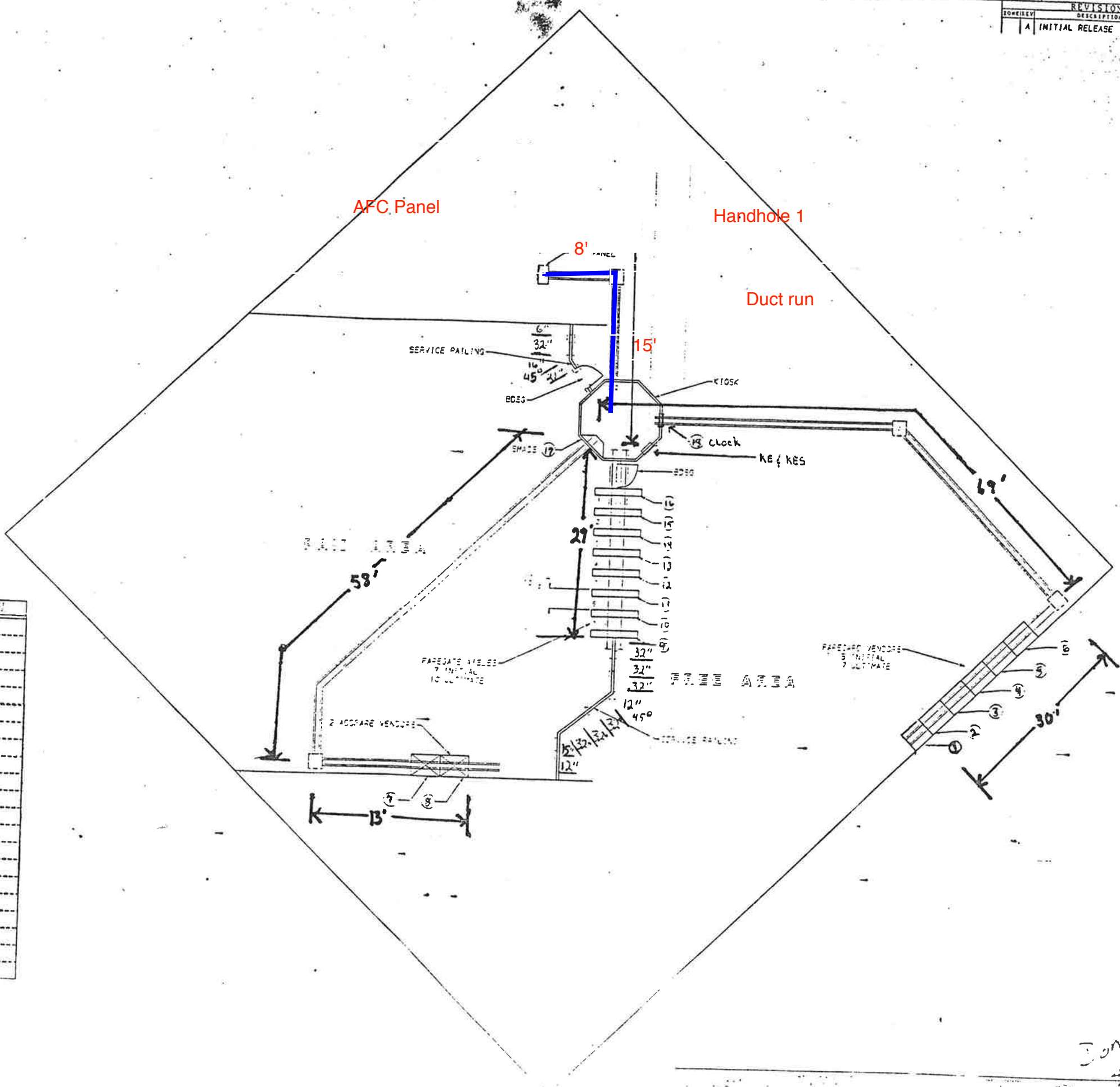


Photo #4 – F06 Anacostia South: AFC Panel



REVISIONS			
NO.	DESCRIPTION	DATE	APPROVED
1	INITIAL RELEASE		



NO.	TYPE	SN	PANEL NO.	NO. OF
1	VENDOR	FV 1835	SSF	2
2	VENDOR	FV 1846	"	6
3	VENDOR	FV 1843	"	8
4	VENDOR	FV 1809	"	10
5	VENDOR	FV 1806	"	12
6	VENDOR	FV 1826	"	14
7	ADDFARE	AF 2817	"	16
8	ADDFARE	AF 2816	"	18
9	EXIT GATE			
10	FEEL GATE	RG 7827	"	1
11	FEEL GATE	RG 7826	"	3
12	FEEL GATE	RG 7825	"	5
13	FEEL GATE	RG 7823	"	7
14	FEEL GATE	RG 7821	"	9
15	FEEL GATE	RG 7820	"	11
16	ENTRY GATE	EG 3808	"	13
17	SPACE		KE	1
18	CLOCK		KE	8
19	EMERG P		KES	6

Done

Mezzanine Inspection Report (Scoping)

Date: 06/11/2015	Station Name: F07 Congress Heights	Mezzanine #: 086	Completed By: Mike Butler
------------------	------------------------------------	------------------	---------------------------

Summary

NEPP-01: Video scoping was completed in the communication and power ducts in both the upper and lower faregate arrays. Pull strings were installed in the communication ducts for the upper and lower faregate arrays. However, scoping and pull string installation could not be completed between the kiosk and AFC panel due to a collapsed duct. Scanning was subsequently completed to identify existing ducts and a new power route between the Kiosk and AFC Panel.

NEPP-02: Video scoping and pull string installation was attempted in two empty alternate ducts that run parallel with the existing power duct. Scoping was completed in both alternate ducts up to the 90-degree vertical bends below the AFC Panel. However, scoping could not be completed all the way to the AFC Panel, and pull string was not installed, due to obstructions at the 90-degree bends. It is recommended to remove the damaged part of either alternate duct between mezzanine side (beneath the existing fare vending machine) up to the shared trough beneath the AFC Panel. A new duct is proposed to replace the damaged section by utilizing the existing duct path through the wall. A new handhole is also proposed on the mezzanine side (beneath the existing fare vending machine) at the start of the new section. Refer to photos and drawings for further information.

Photos and drawings are for reference purposes only; see new schematic drawing/proposed pathway on last page.

NEPP-01: Scoping of Faregate Arrays (12/15/14)

Task	Yes/No	Notes
Communications Duct – Upper Faregate Array (4 Gates)		
Was video scoping completed for the entire duct run?	Yes	Refer to "WMATA Congress Heights 6inch Upper Comm from HH to Faregates Video.avi".
Were pull strings installed at all faregates in the array?	Yes	
Were there any obstructions or blockages? Provide details of type and specific location.	No	
Is the duct at capacity? Provide additional details about the dimensions of ducts and number of wires.	No	6" duct, less than 5 wires
Communications Duct - Lower Faregate Array (3 Gates)		
Was video scoping completed for the entire duct run?	Yes	Refer to "WMATA Congress Heights 6inch Lower Comm faregates video.avi" and "WMATA Congress Heights 3inch Lower Comm faregates video.avi".
Were pull strings installed at all faregates in the array?	Yes	
Were there any obstructions or blockages? Provide details of type and specific location.	No	
Is the duct at capacity? Provide additional details about the dimensions of ducts and number of wires.	No	6" and 3" ducts, less than 5 wires
Power Duct - Upper Faregate Array (4 Gates)		
Was video scoping completed for the entire duct run?	Yes	Refer to "WMATA Congress Heights 6inch Upper Power from HH to Faregates to Kiosk Video.avi".
Were there any obstructions or blockages? Provide details of type and specific location.	No	
Is the duct at capacity? Provide additional details about the dimensions of ducts and number of wires.	No	6" ducts, less than 5 wires
Power Duct - Lower Faregate Array (3 Gates)		
Was video scoping completed for the entire duct run?	Yes	Refer to "WMATA Congress Heights 6inch Lower Power from HH to Faregates to Kiosk Video.avi".
Were there any obstructions or blockages? Provide details of type and specific location.	No	
Is the duct at capacity? Provide additional details about the dimensions of ducts and number of wires.	No	6" ducts, less than 5 wires

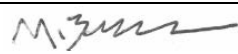
NEPP-01: Scoping of Existing Power Duct - Kiosk to AFC Panel (12/15/14)		
Task	Yes/No	Notes
Kiosk to AFC Panel (Distance: 40')		
Was video scoping completed for the entire duct / conduit run?	No	Refer to "WMATA Congress Heights 6inch Power to AFC Panel Video.avi"
Was pull string installed?	No	
Were there any obstructions or blockages? Provide details of type and specific location.	Yes	Duct is collapsed approximately 20' from the Kiosk.
Is the duct / conduit at capacity? Provide additional details about the dimensions of duct / conduit and number of wires.	N/A	
NEPP-01: Scanning of Mezzanine Floor (01/22/15)		
<ul style="list-style-type: none"> - Scanning was conducted to identify existing ducts and a new power route between the Kiosk and AFC Panel. - The scanning results identified 4 ducts exiting the Kiosk; 3 of these run parallel to the existing power duct up to the AFC Panel in Electrical Room C216. - The scanning results also confirmed that there is sufficient space on the mezzanine floor to run a new in-floor duct if required. 		
NEPP-02: Scoping of Alternate Ducts - Kiosk to AFC Panel (06/11/15)		
Task	Yes/No	Notes
Alternate Duct 1 - Kiosk to AFC Panel (Distance: 40')		
Was video scoping completed for the entire duct / conduit run?	No	Refer to "F07_M086_Congress Heights_Alternate Duct 1_Kiosk to AFC Panel.avi"
Was pull string installed?	No	
Were there any obstructions or blockages? Provide details of type and specific location.	Yes	The duct is blocked and likely collapsed at the vertical 90-degree bend beneath the AFC Panel – concrete intrusion is evident.
Is the duct / conduit at capacity? Provide additional details about the dimensions of duct / conduit and number of wires.	No	Empty 6" walker duct.
Alternate Duct 2 - Kiosk to AFC Panel (Distance: 40')		
Was video scoping completed for the entire duct / conduit run?	No	Refer to "F07_M086_Congress Heights_Alternate Duct 2_Kiosk to AFC Panel.avi"
Was pull string installed?	No	
Were there any obstructions or blockages? Provide details of type and specific location.	Yes	The duct is blocked and likely collapsed at the vertical 90-degree bend beneath the AFC Panel – concrete intrusion is evident.
Is the duct / conduit at capacity? Provide additional details about the dimensions of duct / conduit and number of wires.	No	Empty 6" walker duct.
Observations / Issues / Next Steps		
<ul style="list-style-type: none"> - Alternate Duct 1 and Alternate Duct 2 both run parallel to the existing power duct between Kiosk and AFC Panel. - The only blockage in alternate ducts occurs at the vertical 90-degree bend beneath the AFC Panel – scoping was successful up to this point and empty ducts appear to be in good condition. - The length of remaining alternate duct is 35' and removed/replaced duct is 5' (including a new 90-degree vertical bend). 5' of proposed conduit is also proposed to connect the shared trough to the AFC Panel. - Refer to attached photos and drawings for further information. - There is no existing as-built drawing for this mezzanine. 		
Sign Off		
	GFP Representative	WMATA PRGM
Name:	Mike Butler	
Signature:		
Date:	06/16/15	

Photo #1 – Existing and alternate ducts on mezzanine floor

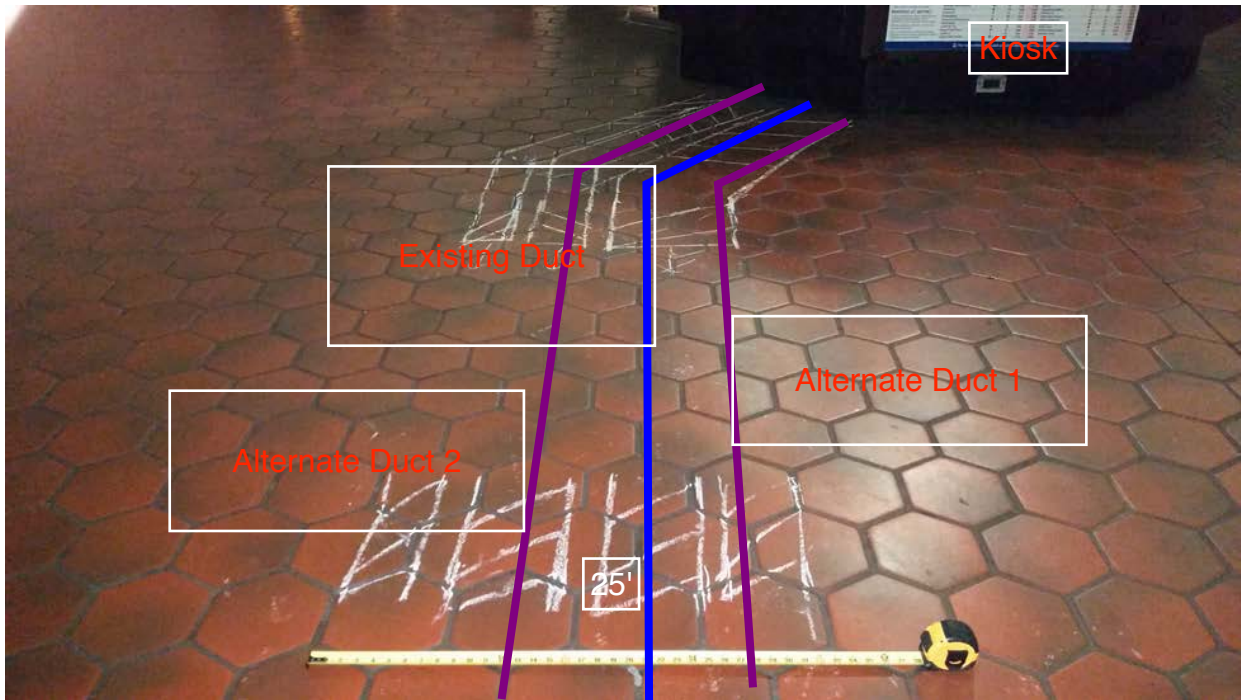


Photo #2 – Existing and alternate ducts on mezzanine floor

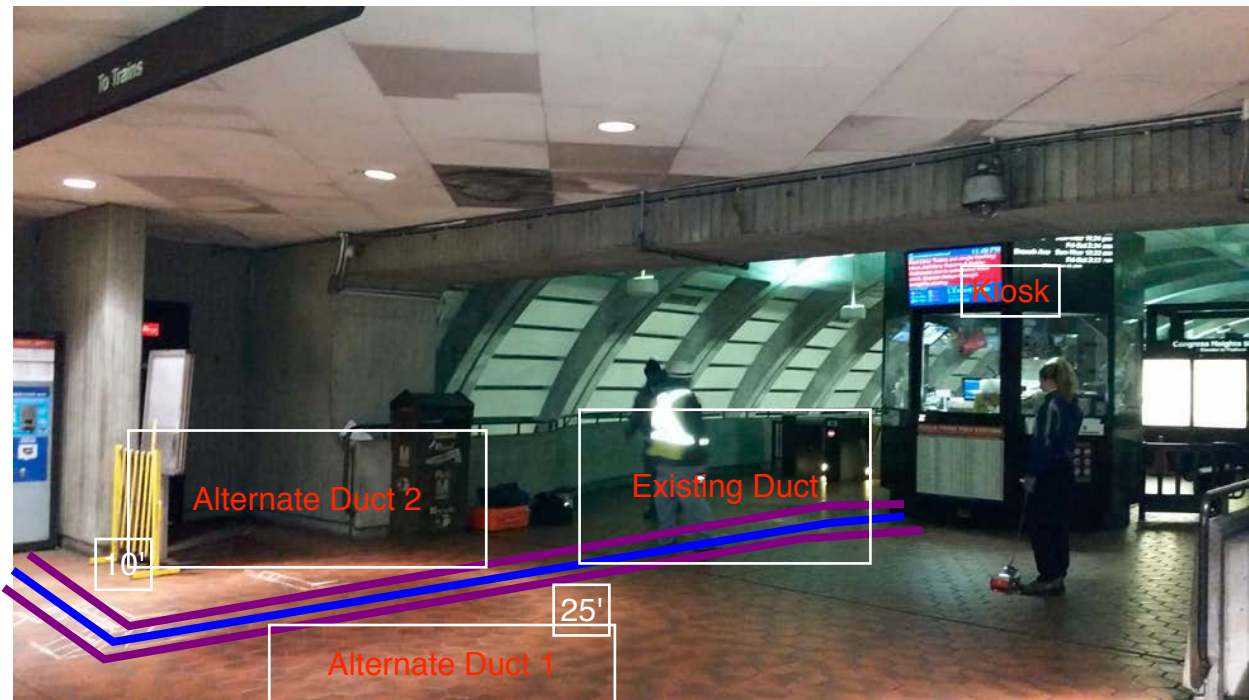


Photo #3 – Existing and alternate ducts on mezzanine floor

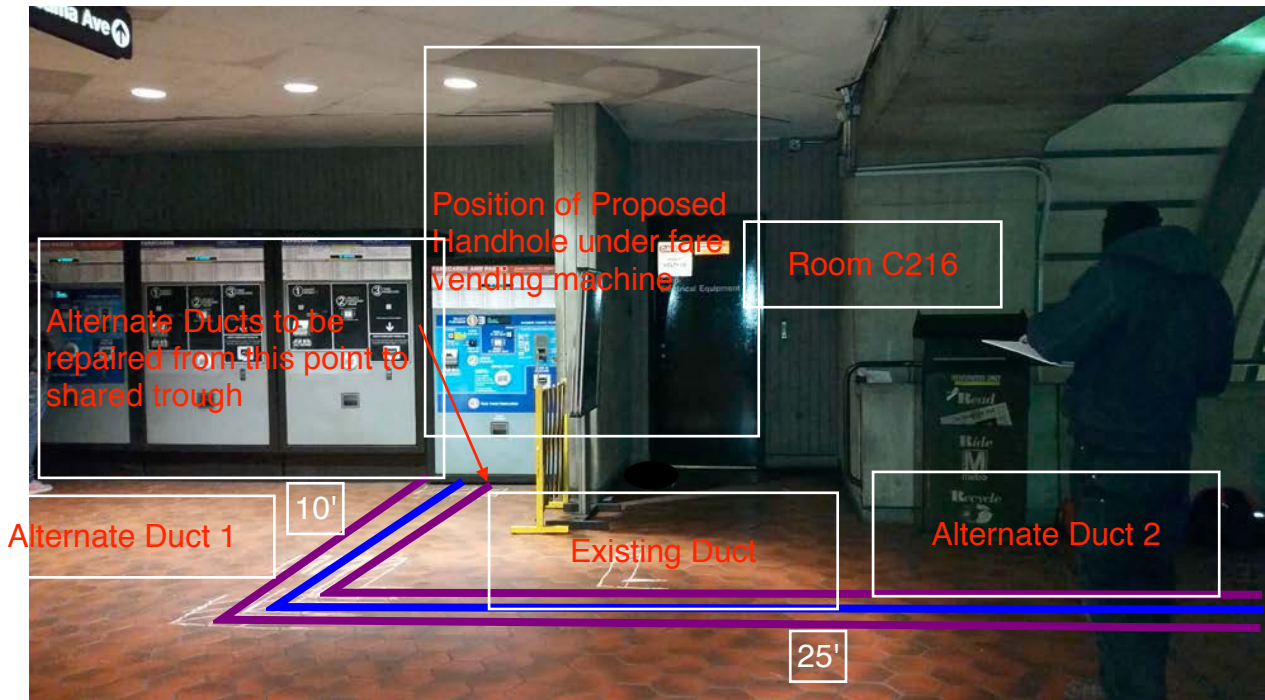


Photo #4 – AFC Panel and Shared Trough in Room C216

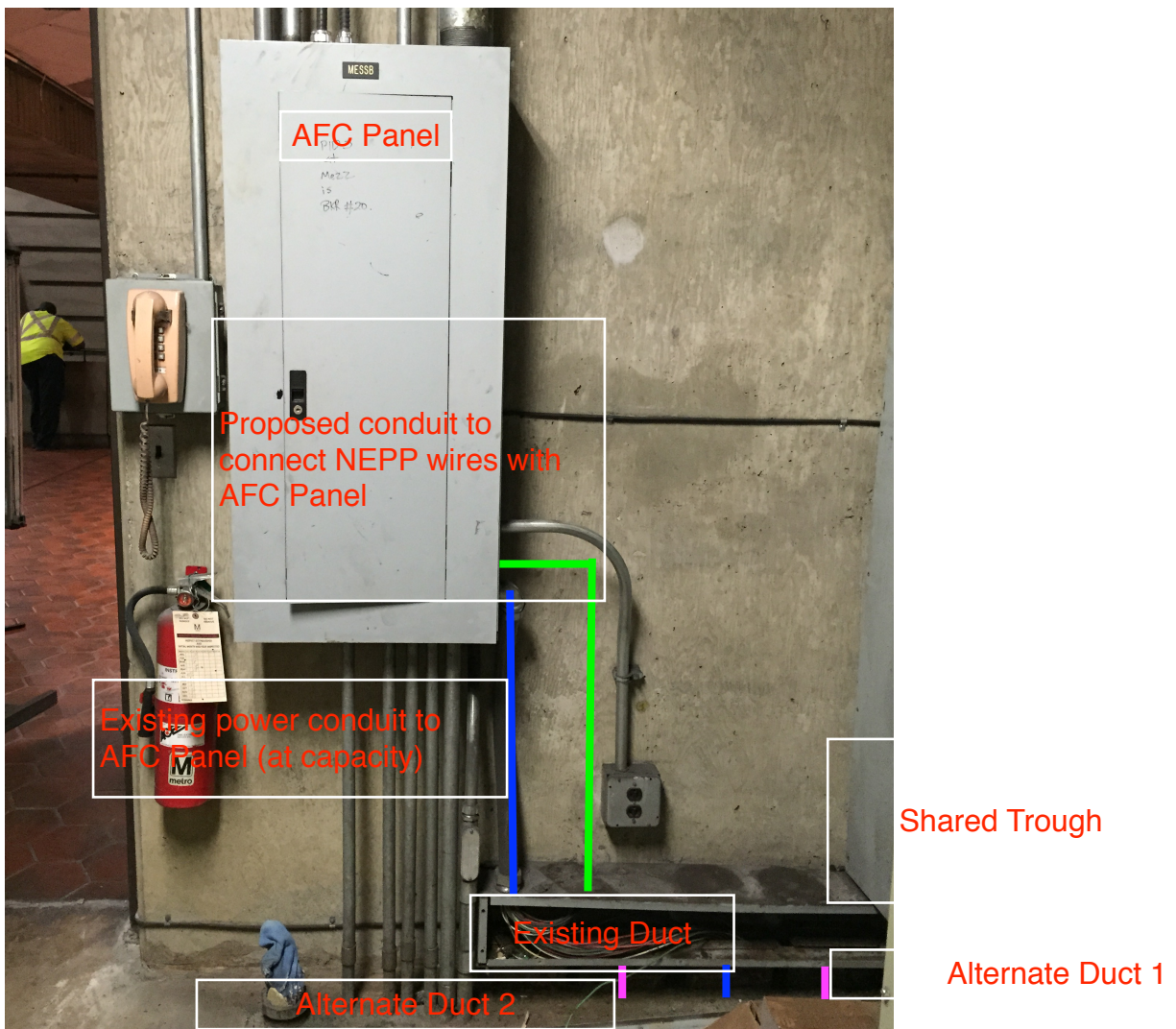
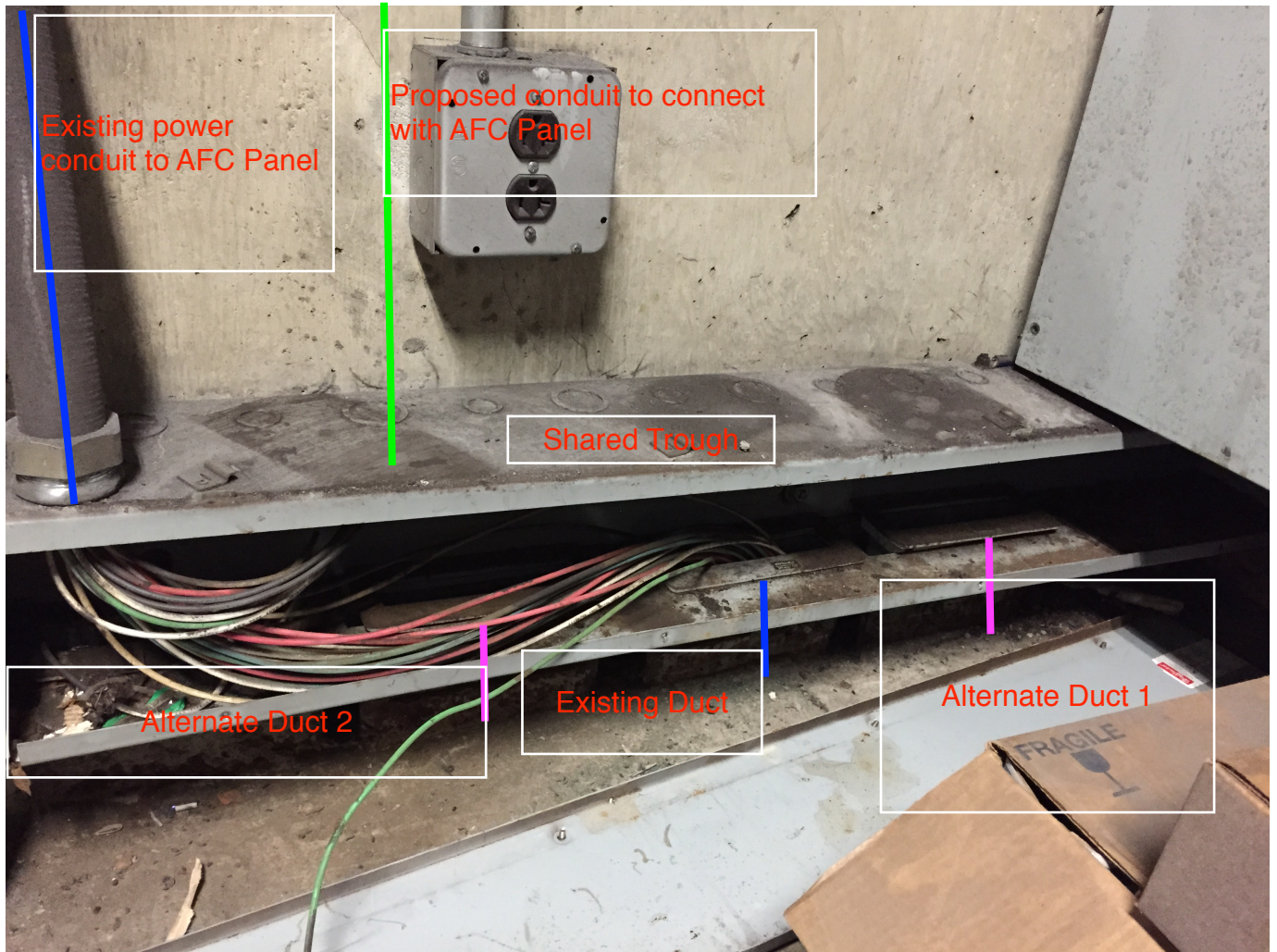
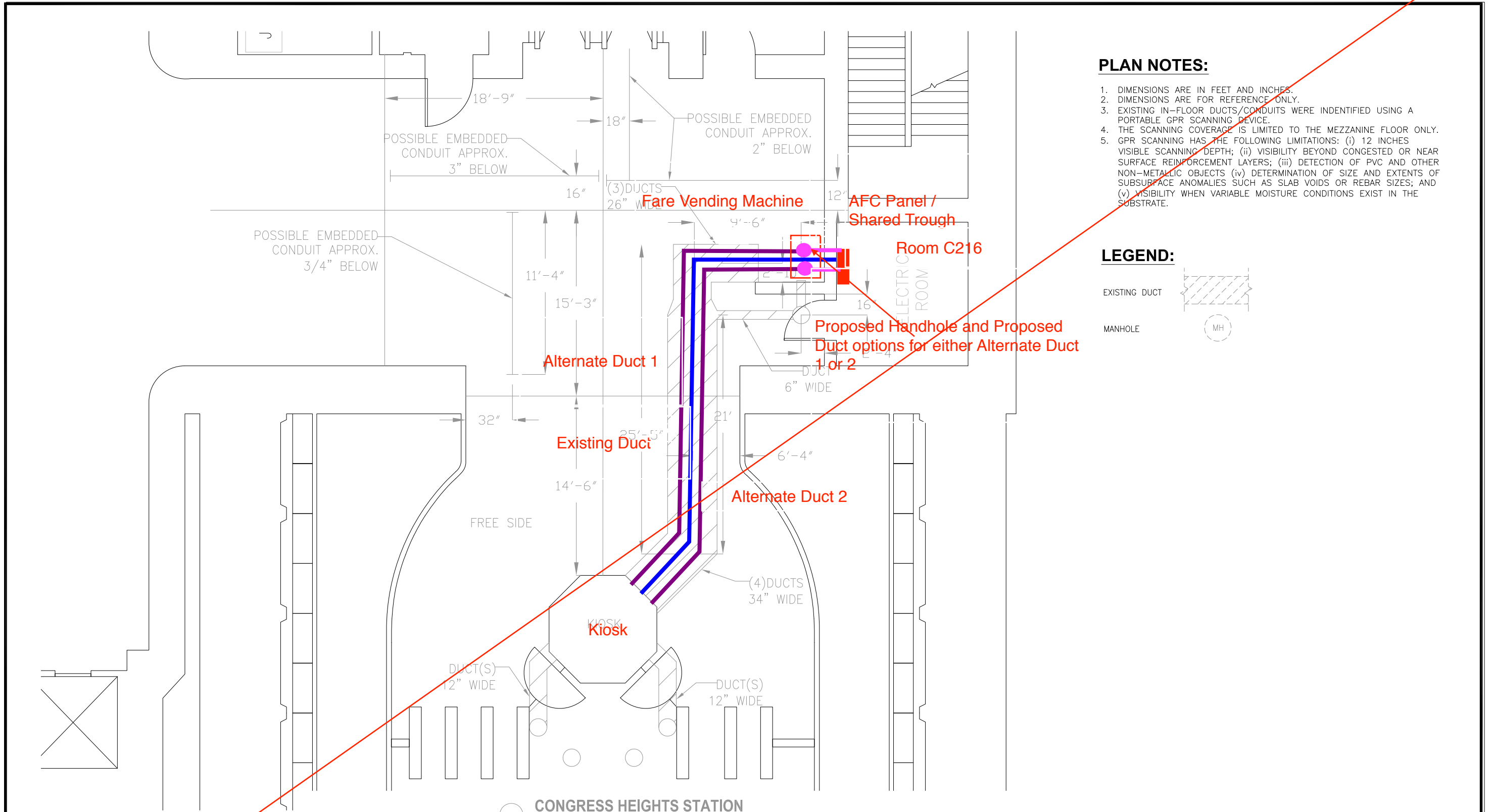


Photo #5 – Close-up of Existing / Alternate Ducts feeding Shared Trough in Room C216

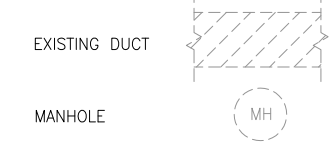




PLAN NOTES:

1. DIMENSIONS ARE IN FEET AND INCHES.
2. DIMENSIONS ARE FOR REFERENCE ONLY.
3. EXISTING IN-FLOOR DUCTS/CONDUITS WERE IDENTIFIED USING A PORTABLE GPR SCANNING DEVICE.
4. THE SCANNING COVERAGE IS LIMITED TO THE MEZZANINE FLOOR ONLY.
5. GPR SCANNING HAS THE FOLLOWING LIMITATIONS: (i) 12 INCHES VISIBLE SCANNING DEPTH; (ii) VISIBILITY BEYOND CONGESTED OR NEAR SURFACE REINFORCEMENT LAYERS; (iii) DETECTION OF PVC AND OTHER NON-METALLIC OBJECTS (iv) DETERMINATION OF SIZE AND EXTENTS OF SUBSURFACE ANOMALIES SUCH AS SLAB VOIDS OR REBAR SIZES; AND (v) VISIBILITY WHEN VARIABLE MOISTURE CONDITIONS EXIST IN THE SUBSTRATE.

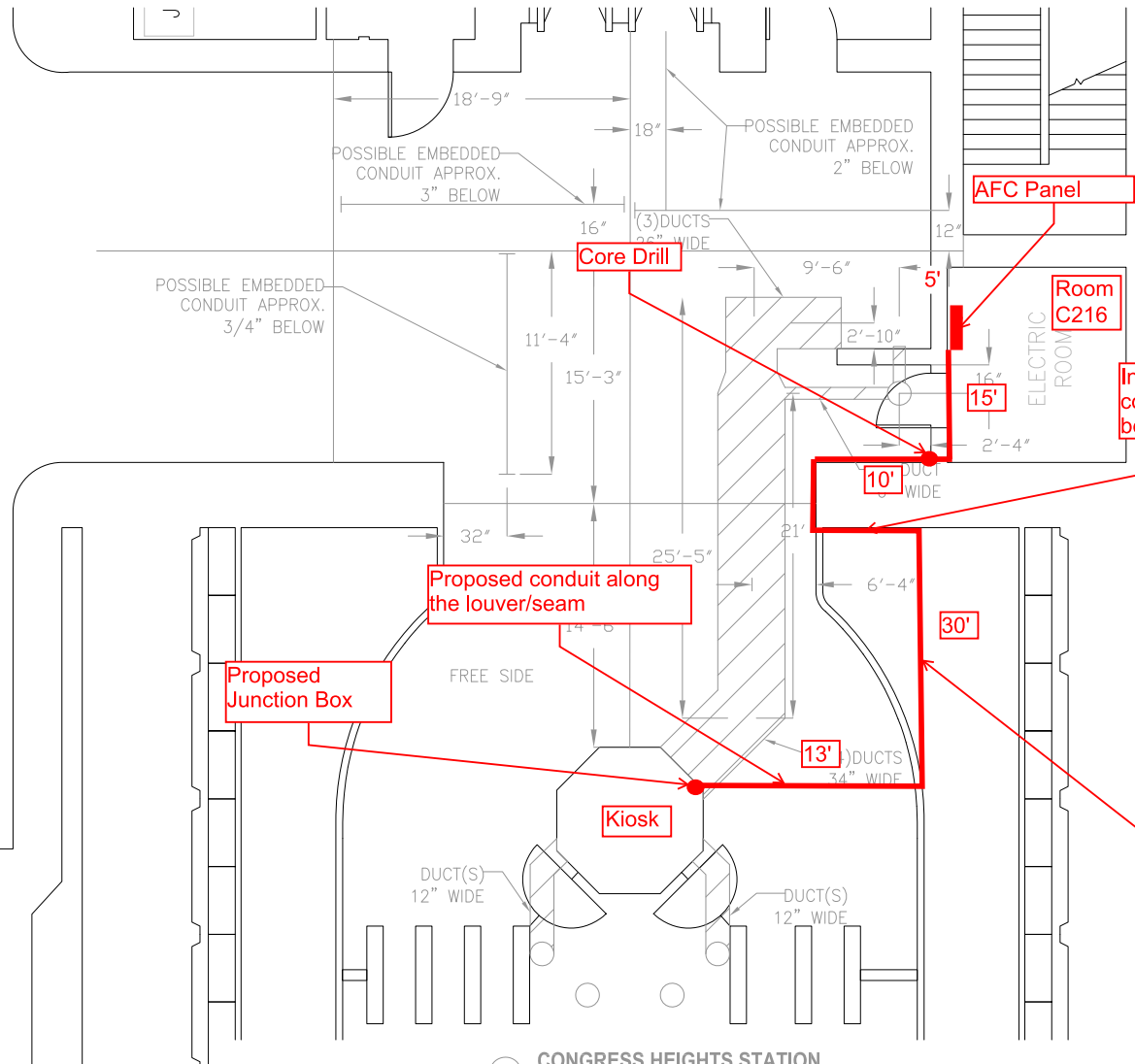
LEGEND:



CONGRESS HEIGHTS STATION
 E-100 SCALE: NOT TO SCALE

See new schematic drawing/proposed pathway on last page

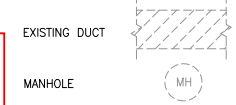
DESIGNED C. LOOSE 11-14 DATE 11-14 DRAWN C. LOOSE 11-14 DATE 11-14 CHECKED M. BUTLER 11-14 DATE 11-14 APPROVED _____ DATE _____	<table border="1" style="width: 100%; border-collapse: collapse;"> <thead> <tr> <th colspan="2">REFERENCE DRAWINGS</th> </tr> <tr> <th>NUMBER</th> <th>DESCRIPTION</th> </tr> </thead> <tbody> <tr><td> </td><td> </td></tr> <tr><td> </td><td> </td></tr> <tr><td> </td><td> </td></tr> <tr><td> </td><td> </td></tr> </tbody> </table>	REFERENCE DRAWINGS		NUMBER	DESCRIPTION									<table border="1" style="width: 100%; border-collapse: collapse;"> <thead> <tr> <th colspan="3">REVISIONS</th> </tr> <tr> <th>DATE</th> <th>BY</th> <th>DESCRIPTION</th> </tr> </thead> <tbody> <tr><td> </td><td> </td><td> </td></tr> <tr><td> </td><td> </td><td> </td></tr> <tr><td> </td><td> </td><td> </td></tr> </tbody> </table>	REVISIONS			DATE	BY	DESCRIPTION										WASHINGTON METROPOLITAN AREA TRANSIT AUTHORITY DEPARTMENT OF TRANSIT INFRASTRUCTURE AND ENGINEERING SERVICES OFFICE OF INFRASTRUCTURE RENEWAL PROGRAM APPROVED _____	 A Gannett Fleming/Parsons JOINT VENTURE SUBMITTED _____ PROJECT MANAGER	15-NEPP-01 IN - FLOOR DUCT INSPECTIONS F07 Congress Heights PROPOSED POWER ROUTE SCALE NOT TO SCALE DRAWING NO. F07-E-100 XXX
REFERENCE DRAWINGS																																
NUMBER	DESCRIPTION																															
REVISIONS																																
DATE	BY	DESCRIPTION																														



PLAN NOTES:

1. DIMENSIONS ARE IN FEET AND INCHES.
2. DIMENSIONS ARE FOR REFERENCE ONLY.
3. EXISTING IN-FLOOR DUCTS/CONDUITS WERE IDENTIFIED USING A PORTABLE GPR SCANNING DEVICE.
4. THE SCANNING COVERAGE IS LIMITED TO THE MEZZANINE FLOOR ONLY.
5. GPR SCANNING HAS THE FOLLOWING LIMITATIONS: (i) 12 INCHES VISIBLE SCANNING DEPTH; (ii) VISIBILITY BEYOND CONGESTED OR NEAR SURFACE REINFORCEMENT LAYERS; (iii) DETECTION OF PVC AND OTHER NON-METALLIC OBJECTS (iv) DETERMINATION OF SIZE AND EXTENTS OF SUBSURFACE ANOMALIES SUCH AS SLAB VOIDS OR REBAR SIZES; AND (v) VISIBILITY WHEN VARIABLE MOISTURE CONDITIONS EXIST IN THE SUBSTRATE.

LEGEND:



CONGRESS HEIGHTS STATION
SCALE: NOT TO SCALE

CONTRACT NO.
XXXXXX

DESIGNED	C. LOOSE	11-14
DRAWN	C. LOOSE	11-14
CHECKED	M. BUTLER	11-14
APPROVED		

REFERENCE DRAWINGS	
NUMBER	DESCRIPTION

REVISIONS		
DATE	BY	DESCRIPTION

WASHINGTON METROPOLITAN AREA TRANSIT AUTHORITY
DEPARTMENT OF TRANSIT INFRASTRUCTURE AND ENGINEERING SERVICES
OFFICE OF INFRASTRUCTURE RENEWAL PROGRAM
APPROVED _____

GFP A Gannett Fleming/Parsons JOINT VENTURE
SUBMITTED _____
PROJECT MANAGER

15-NEPP-01
IN - FLOOR DUCT INSPECTIONS
F07 Congress Heights
PROPOSED POWER ROUTE
SCALE: NOT TO SCALE
DRAWING NO.: F07-E-100
XXX